



**PLASTINDIA  
INTERNATIONAL  
UNIVERSITY**

*Building Our Future Together*

SPONSORED BY PLASTINDIA FOUNDATION

# INSTITUTIONAL DEVELOPMENT PLAN

# 2034



<b>1</b>	<b>Visionary Foreword by President</b>	<b>5</b>
<b>2</b>	<b>A Glimpse into the Future: Executive Summary</b>	<b>8</b>
<b>3</b>	<b>Purpose of Institutional Development Plan, Methodology and Approach</b>	<b>10</b>
<b>4</b>	<b>Main Objectives and Goals to be achieved by University</b>	<b>13</b>
4.1	Main Goals	13
4.2	Objectives	15
<b>5</b>	<b>Beginning of Our Story: Genesis</b>	<b>17</b>
<b>6</b>	<b>The Need for Excellence: World-Class Plastics and Polymer Education</b>	<b>20</b>
<b>7</b>	<b>About Plastindia International University</b>	<b>24</b>
<b>8</b>	<b>Meet Our Esteemed Partner: UMass Lowell</b>	<b>28</b>
<b>9</b>	<b>Our Commitment: Social and Academic Mission</b>	<b>31</b>
<b>10</b>	<b>Aligning with National Education Policy (NEP) 2020: Strategic Goals</b>	<b>34</b>
<b>11</b>	<b>Giving Back: Corporate Social Responsibility Goals</b>	<b>37</b>
<b>12</b>	<b>Leadership and Governance</b>	<b>40</b>
12.1	Organogram	41
12.2	Key Leadership	43
12.3	Committee Structure	44
12.4	Policy Pillars	47
12.5	Stakeholder Inclusion	49
<b>13</b>	<b>Financial Strategy and Resource Management</b>	<b>53</b>
13.1	Financial Plan for 10 Years	54
13.1.1	Students' Strength for 10 Years	54
13.1.2	Human Resource	57
13.1.3	Capital Expenditure	59
13.1.4	Income Statement Projections	61
13.1.5	Projected Revenue	62
13.1.6	Cashflow Statement	64
13.2	Financial Sustainability	65
13.3	Investment Strategy	66
13.4	Revenue Generation Strategies	67
<b>14</b>	<b>Building Our Future: Infrastructure and Facilities</b>	<b>69</b>
14.1	Academic & Research Facilities	70
14.2	Living and Dining: 10-Year Hostel Master Plan	74
14.3	Amenities	75
14.4	IT & Digital Infrastructure	76
14.5	Sustainability and Green Initiatives	76

<b>15</b>	<b>Innovating Academics</b>	<b>78</b>
15.1	PIU's Integrated Learning Strategy	78
15.2	State-of-the-art Academic Pedagogy	80
15.3	Research & Innovation Strategies	81
15.3.1	Centre of Excellence in Sustainability	81
15.3.2	Intellectual Property Right, Patent, and Trademark Enablers	82
15.3.3	Targeted and Collaborative Research	83
15.3.4	Industry and Institutional collaboration & Consultation	84
<hr/>		
<b>16</b>	<b>Digitalization</b>	<b>86</b>
16.1	Complete Digital Campus	86
16.2	Online Student and Faculty Portals/ Applications	87
16.3	Digital Library and Digital Learning	88
16.4	Enterprise Resource Planning (ERP)	89
<hr/>		
<b>17</b>	<b>Human Resources Management</b>	<b>91</b>
17.1	Students, Faculty and Researchers & Staff Empowerments	92
17.1.1	Students Empowerment	92
17.1.2	Faculty and Researchers Empowerment	92
17.1.3	Staff Empowerment	93
17.2	Cross Functional Enablers	93
17.3	Strategic Funding and Emotional Support	94
17.4	Enablers for Pedagogical Innovation	95
17.5	Supportive-Facilitative Enablers	97
<hr/>		
<b>18</b>	<b>Student Management</b>	<b>99</b>
18.1	Admission & Enrolment Management	99
18.1.1	Admission Criteria	99
18.1.2	Communication and Support	100
18.2	Internship & Placements	100
18.2.1	Internship Excellence	100
18.2.2	Placement Services	101
18.3	Alumni Relationship	101
<hr/>		
<b>19</b>	<b>Building Networks and Partnerships</b>	<b>104</b>
19.1	Public Relations and Outreach	104
19.2	Industry Collaborations and Management	105
19.3	Internationalization and Global Goals	106
<hr/>		
<b>20</b>	<b>Achieving Excellence: Accreditation and Ranking</b>	<b>109</b>
20.1	National Assessment and Accreditation Council (NAAC)	109
20.2	National Board of Accreditation (NBA)	110
20.3	National Institutional Ranking Framework (NIRF)	111
20.4	Gujarat State Institutional Rating Framework (GSIRF)	111
<hr/>		
<b>21</b>	<b>Action Plan: A Roadmap for the Next Decade</b>	<b>113</b>
21.1	Short-term Plan (2024 to 2025)	113
21.2	Mid-term Plan (2025 to 2027)	115
21.3	Long-term Plan (2027 to 2034)	116
<hr/>		
<b>22</b>	<b>Forging Ahead: The Way Forward</b>	<b>119</b>
<hr/>		

CHAPTER

1

**Visionary Foreword by President**



**Shri M P Taparia,**  
President, Plastindia International University

It is with great enthusiasm and pride that I extend a warm welcome to you on behalf of Plastindia International University (PIU), India's pioneering institution dedicated to plastics and sustainability. Established under the Gujarat Private Universities Act, 2009, PIU is set to redefine education in the fields of Plastics and Polymer field.

At PIU, we believe in laying the groundwork for a future where innovation, sustainability, and excellence go hand-in-hand. Our vision is to provide an unparalleled educational experience that encompasses not only theoretical fundamentals but also practical knowledge, hands-on training, research, and innovation. We are committed to fostering an environment that nurtures intellectual curiosity and equips students with the skills needed to make a meaningful impact in the world.

PIU is deeply committed to adhering to the guidelines of the University Grants Commission (UGC) as we carve our path forward. Our mission is to balance theoretical fundamentals with practical knowledge, hands-on training, research, and innovation. Acknowledging the diverse challenges and immense opportunities within India's higher education sector, our development strategy is closely aligned with UGC guidelines. We strive to elevate academic standards, adopt research excellence, include all stakeholders, and embrace technological advancements.

In this pursuit, we are proud to announce our transformative partnership with the University of Massachusetts, Lowell, USA. This partnership brings world-class expertise to PIU, mentoring us in establishing top-tier engineering programs. Their input on infrastructure development, academic structure, curriculum design, and quality assurance ensures that our educational offerings meet global standards. By implementing the National Education Policy (NEP) 2020 from the outset, we align our curriculum with a holistic and multidisciplinary education system, supporting a well-rounded development approach.

The UGC guidelines advocate for a holistic approach to institutional growth, emphasizing interdisciplinary collaboration, industry alliances, and community engagement. At PIU, we are committed to tailoring our development strategies to our unique context and strengths while upholding fundamental principles of academic integrity, fairness, and responsibility.

Industry support and opportunities are crucial for PIU to achieve its goals. We believe that collaboration with the industry will provide our students with invaluable insights and experiences that align with current industry standards and future trends. As we embark on this exciting journey, PIU remains dedicated to meeting the evolving needs of the nation and contributing significantly to the global academic narrative. Our focus is on creating a vibrant community where aspirations are nurtured, and potential is realized.

We invite industry leaders and educational institutions to support us at PIU for tie-ups and collaborations. Together, we can achieve our ambitious goals and create a brighter future for all.

CHAPTER

# 2

**Executive Summary:  
A Glimpse into the Future**

## Executive Summary: A Glimpse into the Future

Plastics are fundamental to modern society, integral to industries ranging from automotive to healthcare. Their global demand continues to rise due to their versatility, durability, and cost-effectiveness. However, there is a significant gap in specialized education focused on plastics engineering, with most institutions offering only limited courses or electives. This gap fails to meet the industry's growing need for skilled professionals.

Plastindia International University (PIU) aims to fill this gap and become a global leader in plastics engineering and technology education. Our mission is to create a world class university that provides top-tier education, drives cutting-edge research, and establishes strong industry connections. We aspire to equip our graduates with the skills and knowledge to lead and innovate in the plastics sector. Strategically located in Vapi, Gujarat, PIU leverages its proximity to the thriving plastics industry to create a hub for education, research, and innovation. A pivotal technical partnership with the University of Massachusetts, Lowell (UMass Lowell), a globally recognized leader in plastics engineering, enhances our academic offerings. This collaboration includes joint research initiatives, faculty and student exchange programs, and leveraging UMass Lowell's renowned expertise to bolster PIU's educational and research capabilities.

PIU has garnered enthusiastic support from industry leaders who recognize the university's potential to bridge the education-industry gap in plastics engineering. We invite donors to contribute to PIU's growth through targeted investments in infrastructure, scholarships, research endowments, and industry partnerships. By collaborating closely with industry stakeholders, PIU aims to foster innovation, drive economic growth, and promote sustainable practices in the global plastics sector.

Our commitment to academic excellence is reflected in our comprehensive curriculum, which offers specialized programs in plastics engineering and technology aligned with industry needs. We attract top-tier faculty with extensive experience and expertise in plastics engineering and related fields. Our strong research culture encourages innovation and the development of new technologies, with a focus on sustainability and practical applications.

The establishment of PIU brings significant social and economic benefits. It provides specialized education and training, ensuring a steady supply of skilled professionals to the plastics industry. It stimulates local economic growth, creates job opportunities, enhances the educational infrastructure in Vapi, Gujarat, and facilitates practical learning experiences, internships, and job placements through close ties with the plastics industry.

To achieve our vision, PIU requires substantial financial support. This includes infrastructure development for state-of-the-art laboratories, research centers, and learning facilities; funding for faculty recruitment, curriculum development, and research projects; and scholarships and financial aid to ensure education is accessible to all students. We seek contributions from industry stakeholders, philanthropic organizations, and individuals dedicated to advancing plastics education and technology. Your support will be instrumental in realizing our mission and driving significant advancements in the plastics sector.

Plastindia International University's Institutional Development Plan outlines a strategic path to becoming a premier institution in plastics engineering and technology. With a clear vision, commitment to academic excellence, and essential financial support, PIU is poised to make significant contributions to the plastics industry and society. We invite all stakeholders to join us in this transformative journey, ensuring a sustainable and innovative future for the global plastics sector.

CHAPTER

# 3

**Purpose of Institutional Development Plan,  
Methodology and Approach**

## Purpose of Institutional Development Plan, Methodology and Approach

An Institutional Development Plan (IDP) is a strategic blueprint that outlines an institution's vision, mission, goals, and strategies for enhancing its overall performance and achieving its objectives. It serves as a roadmap for growth and improvement in all aspects of the institution, including academics, administration, infrastructure, and community engagement.

Key Purposes of IDP sets a clear direction and provides a focused path for the institution's development. It includes resources which aligns optimal utilization of available resources to achieve goals. It improves decision-making Facilitates informed choices based on data and analysis. By Enhancing accountability, it establishes clear performance indicators and measures. Some of the major purposes include to fosters stakeholder engagement and involvement various planning process. Also supports continuous improvement and provides a framework for ongoing evaluation and refinement.

For PIU developing an IDP using the outlined methodology can ensure a structured and effective approach.

Sr. No.	Particulars	Methodology
1	<b>SWOT Analysis</b>	<ul style="list-style-type: none"> <li>PIU's approach for IDP commenced with a comprehensive SWOT analysis to assess its internal strengths and weaknesses, as well as external opportunities and threats.</li> <li>This involves collecting data on the university's academic programs, research capabilities, infrastructure, and market positioning.</li> </ul>
2	<b>Stakeholder Analysis</b>	<ul style="list-style-type: none"> <li>Engaging key stakeholders—including faculty, staff, students, alumni, and industry partners is crucial for ensuring that the IDP reflects a broad range of perspectives and needs.</li> <li>PIU will facilitate workshops, surveys, and focus groups to gather input from these groups. This participatory approach will help in identifying priority areas and aligning the IDP with the expectations and requirements of those directly involved with or impacted by the university.</li> </ul>
3	<b>Goal Setting</b>	<ul style="list-style-type: none"> <li>Based on the insights gained from the SWOT and stakeholder analyses, PIU effectively define clear, measurable goals that align with its mission and strategic vision.</li> </ul>
4	<b>Strategy Development</b>	<ul style="list-style-type: none"> <li>PIU needs to outline specific strategies and initiatives to achieve the defined goals.</li> <li>The strategies involve developing new academic programs, launching international collaborations, or investing in infrastructure improvements.</li> <li>Each strategy should be detailed with action plans, responsible parties, and timelines to guide implementation effectively.</li> </ul>
5	<b>Resource Allocation</b>	<ul style="list-style-type: none"> <li>For the execution of strategies, PIU shall determine the necessary resources—human, financial, and physical.</li> <li>Budgeting for new projects, allocating staff to various initiatives, and ensuring that the necessary facilities and technology are in place needs to be planned.</li> </ul>

By systematically applying the above methodology, PIU aims to develop a robust IDP that aligns with its mission and effectively addresses its strategic priorities. This structured approach will help in achieving its objectives and ensuring sustainable growth and development.

PIU can significantly benefit from a thoughtful selection of approach tailored to its unique context. A bottom-up approach, which actively engages faculty, staff, students, and alumni, promotes inclusivity and can enhance buy-in through diverse perspectives. For PIU, this could be particularly useful in initiatives requiring widespread support, such as curriculum reforms or campus developments. The most effective approach for PIU depends on its culture, size, and the nature of the planning process, with the participatory approach often providing a comprehensive and inclusive framework for developing and implementing strategic initiative.

# CHAPTER

# 4

**Main Objectives and Goals to be  
achieved by University**

## Main Objectives and Goals to be achieved by University

Plastindia International University located in Vapi, Gujarat, was founded in 2016 through a forward-thinking initiative by the Plastindia Foundation. PIU is dedicated to developing the next generation of leaders who will drive innovation and sustainability in these critical industries and focused exclusively on Plastics and Sustainability, providing specialized technology and management courses as well as continuing education programs tailored for working professionals.

### 4.1 Main Goals

#### Globally Relevant Academic Programs

##### Strategy 1

---

Develop interdisciplinary academic programs that seamlessly blend core subjects with emerging fields and industry-specific skills. Focus on creating a robust foundation in critical thinking, problem-solving, communication, and creativity to ensure students are well-prepared for dynamic global careers.

##### Strategy 2

---

This strategy aims to enhance the educational experience at Plastindia International University and ensure that faculty are equipped to deliver cutting-edge, globally relevant education.

#### Advance Digital Learning and Technology Integration

##### Strategy 1

---

Implement a cutting-edge LMS at Plastindia International University to streamline course delivery, interactive materials, and assessments. The LMS will foster collaborative learning, personalized instruction, and real-time feedback, enhancing the educational experience with advanced digital tools and resources.

##### Strategy 2

---

Provide comprehensive professional development programs for faculty to effectively integrate technology into their teaching practices. This training will cover online instructional strategies, multimedia content creation, and data-driven decision-making.

#### Cultivate a Thriving Research and Innovation Ecosystem

##### Strategy 1

---

Create dedicated research centres at PIU that focus on key areas of innovation and interdisciplinary research. Forge partnerships with leading industry players, research organizations, and international institutions to drive advanced research and foster a culture of innovation.

##### Strategy 2

---

Provide students with opportunities to participate in research projects, entrepreneurship ventures, and innovation challenges. Support their initiatives with mentorship, funding, and access to cutting-edge facilities, nurturing their creativity and problem-solving skills.

## Innovative Learning Ecosystem

### Strategy 1

---

Design interdisciplinary courses that integrate multiple fields, enabling students to explore diverse subjects and understand complex challenges.

### Strategy 2

---

Set up dedicated innovation hubs equipped with cutting-edge technologies, such as 3D printers, robotics kits, and virtual reality labs

## Enhance Pedagogical Practices

### Strategy 1

---

Implement robust faculty development programs focused on advancing digital literacy, integrating technology into teaching, and adopting student-centered methodologies.

### Strategy 2

---

Create dedicated teaching labs equipped with advanced technology and tools to encourage innovative teaching practices. Facilitate experimentation with new methodologies, interactive content development, and peer collaboration.

## Transformation and Innovation in the Plastics Industry

### Strategy 1

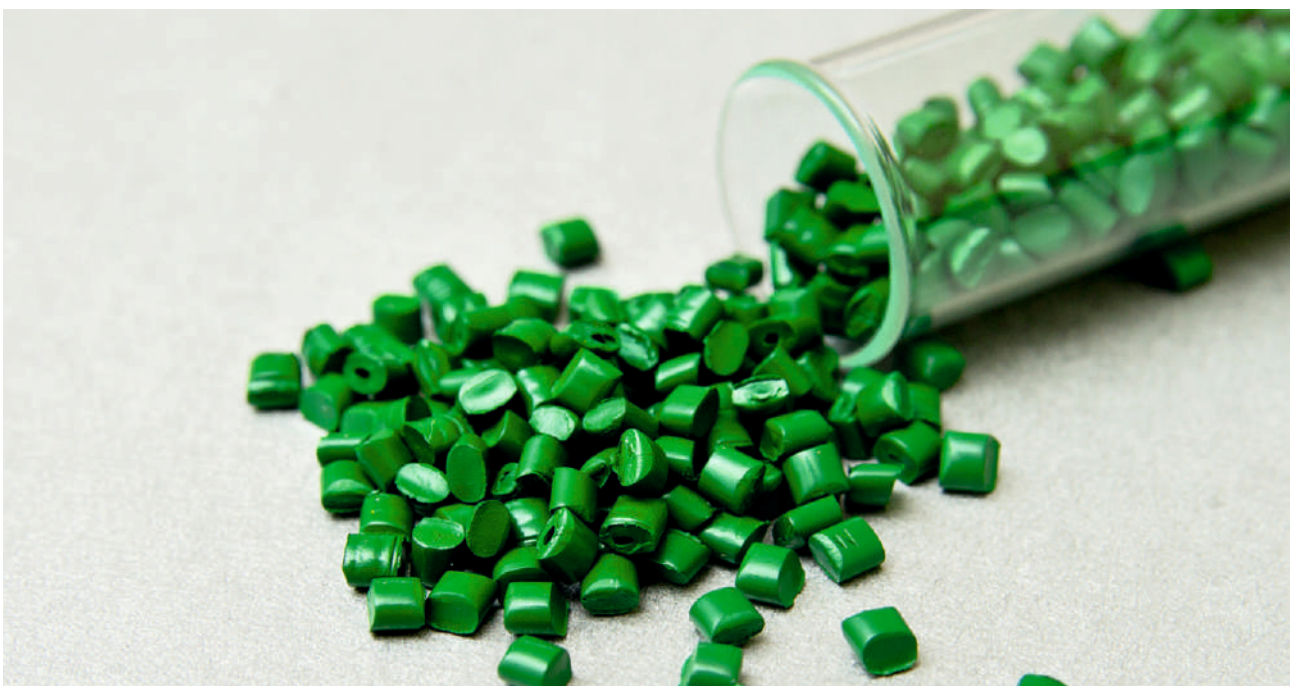
---

Develop advanced educational programs that integrate current research and technology in plastics. Equip students with theoretical knowledge and practical skills, emphasizing sustainability and addressing industry challenges through case studies, industry partnerships, and hands-on learning.

### Strategy 2

---

Foster a learning environment that enhances critical thinking, creativity, and adaptability. Use innovative teaching and research methods to support problem-solving and sustainable solutions through projects, workshops, and collaboration.



## **4.2 Objectives**

### **4.2.1 Advancing Specialized Education**

PIU aims to offer world-class education in Plastics and Sustainability, providing specialized undergraduate and postgraduate programs. The focus is on delivering cutting-edge knowledge and practical skills tailored to meet the needs of the evolving plastics industry and its associated fields.

### **4.2.2 Promoting Sustainability**

Essential to PIU's mission is the commitment to sustainability. The university strives to integrate sustainable practices into its curriculum, research, and operations, ensuring that students and researchers are equipped to lead in developing eco-friendly solutions and advancing environmental stewardship.

### **4.2.3 Fostering Innovation and Research**

PIU is dedicated to driving innovation through rigorous research initiatives. By establishing state-of-the-art research facilities and encouraging interdisciplinary collaboration, the university aims to advance knowledge and innovation through research in the plastics sector and related disciplines.

### **4.2.4 Building Industry Partnerships**

Collaborating with leading institutions and industry partners, such as the Technical Partnership with University of Massachusetts Lowell, PIU seeks to enhance the quality and global relevance of its programs. These partnerships help ensure that the university's educational offerings and research are aligned with international standards and industry needs.

### **4.2.5 Supporting Professional Development**

PIU is committed to continuous learning and professional growth. By offering continuing education programs and targeted training for working professionals, the university ensures that individuals in the industry remain current with the latest advancements and best practices which helps not only students but the industry members as well.

By aligning its goals with industry needs and global standards, PIU not only prepares its students to excel but also drives transformative progress within the plastics sector, ensuring a sustainable and innovative future.

CHAPTER

# 5

**Beginning of Our Story: Genesis**

## Beginning of Our Story: Genesis

Plastindia International University (PIU), located in Vapi, Gujarat, was established in 2016 with a visionary initiative by the Plastindia Foundation. This foundation, representing major associations in India's plastics industry since 1987, spearheaded the establishment of PIU to provide world-class education aimed at producing highly skilled professionals and entrepreneurs for the plastics and polymer sector. PIU embodies a vision focused on developing future leaders in the plastics and sustainability sectors.

## Evolution of PIU

In 2009, during the Vibrant Gujarat Global Investors' Summit at Ahmedabad (Gujarat) a significant milestone was achieved with the signing of a Memorandum of Understanding between Plastindia Foundation and the Government of Gujarat, represented by GIDC. This marked the inception of a visionary initiative to establish a knowledge center with the objective of creating world class technical and professional educational and training facilities with courses specifically designed and dedicated to the plastics industry.

Over the years, this initiative evolved through rigorous evaluation under the Gujarat Private University Act of 2009. Following diligent scrutiny by the Screening Committee, approval was granted for the Knowledge Center to attain private university status. The approval was received and Plastindia International University was notified as body corporate under the Gujarat Private University Act, 2009 by Gazette Notification dated 6th May, 2016.

This journey highlights a strong dedication to advancing education in plastics technology. It reflects the forward-thinking efforts of many collaborators who worked together to shape the future of technical education in Gujarat and beyond.



## The Promoting Body

Plastindia International University (PIU), Vapi traces its roots back to the visionary efforts of the Plastindia Foundation, the Apex body of major associations connected with Plastics in India since 1987.



Plastindia Foundation has taken a proactive step to set up Plastindia International University with a vision to provide world class education to generate high quality trained personnel and entrepreneurs for the plastics and polymer industry. Plastindia Foundation stands as an esteemed bastion of innovation and sustainability within the plastics industry.

As the apex body, it unites major associations, organizations, and institutions dedicated to pushing the boundaries of plastic technology. With a shared vision and unwavering dedication, the foundation endeavours to propel India to the forefront of the global plastics arena, positioning it as a premier sourcing destination renowned for unparalleled quality and innovation.

Plastindia Foundation has taken a proactive step to address the manpower requirements in executive and management cadres of the growing Indian plastics industry by taking an initiative to set up Plastindia International University.

## Recognition by the University Grants Commission (UGC)

PIU is recognized by the University Grants Commission (UGC), a statutory body under the Ministry of Education, Government of India. This recognition, under Section 2(f) of the UGC Act, acknowledges PIU's commitment to quality education and compliance with national standards.

PIU operates as a Private University under the provisions of the Gujarat Private University Act 2009, ensuring governance and administration aligned with state regulations and fostering an environment conducive to academic excellence and innovation.

CHAPTER

# 6

**The Need for Excellence:  
World-Class Plastics and Polymer Education**

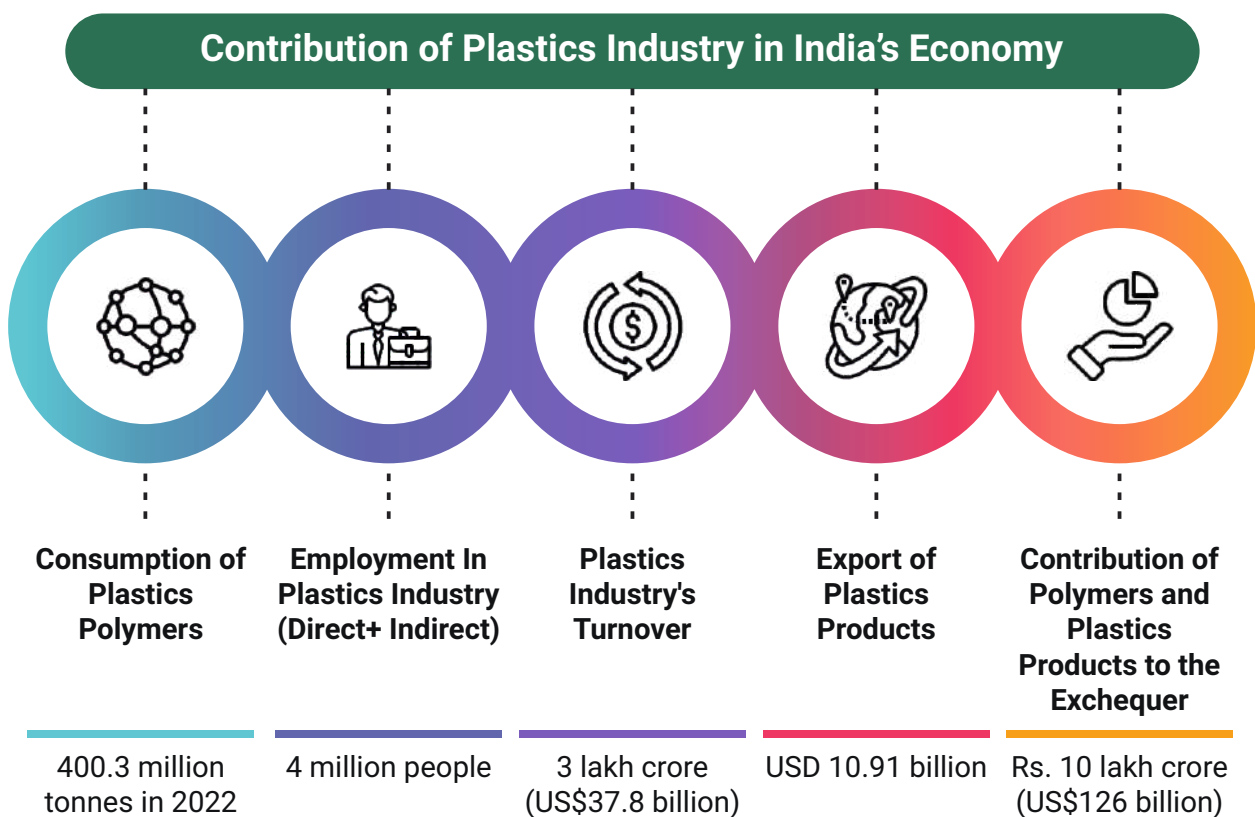
## Plastics Industry and Education Scenario

The plastics industry operates in two main stages: (i) manufacturing polymers, known as "upstream," and (ii) converting polymers into plastic products, referred to as "downstream." Upstream polymer manufacturers have established large-scale plants equipped with advanced technology imported from global leaders to ensure competitiveness. The petrochemical sector upstream has also seen consolidation to maintain global competitiveness.

Since its inception in 1957 with the production of polystyrene, the Indian plastics industry has grown significantly. Today, it is a diverse sector spread across the country, encompassing over 2,000 exporters and employing approximately 4 million people. The industry includes more than 30,000 processing units, with small and medium-sized enterprises comprising 85-90 percent of the sector.

The Indian plastics industry holds significant promise due to its robust capacity, infrastructure, and availability of cost-effective labor. It benefits from a strong network of polymer producers, as well as manufacturers of plastics processing machinery and molds within the country.

Government initiatives further support the education and skill development in plastics and polymer science, aiming to foster a talent pool capable of driving innovation and sustainable growth. Research institutes and universities actively engage in pioneering research in areas such as polymer chemistry, bioplastics, and sustainable materials. This collaborative approach not only enhances the competitiveness of the Indian plastics industry but also contributes to global advancements in materials science and engineering.



## How Plastics Touch Our Daily Lives?

Plastics have become an indispensable part of our daily lives, influencing various aspects with their versatility and practicality. While plastics provide unparalleled benefits in terms of functionality and affordability, their environmental impact necessitates responsible consumption and recycling practices. As we navigate the complexities of modern life, understanding the role of plastics helps us appreciate their benefits while striving for sustainable solutions to mitigate their environmental footprint.

## Contribution of Plastics Industry in India's Economy

Sub-Sectors	Example of Products
<b>Agriculture/Horticulture</b>	Sheeting and twine for agricultural purposes
<b>Automotive</b>	Many car parts, including body panels, interior trim dashboard and increasingly elements of the power-train
<b>Construction</b>	Drainage systems, double glazing profiles, guttering, waterproofing membranes, foam insulation
<b>Electrical/Electronic</b>	Consumer goods, white goods, TV, computer and telephone components
<b>Household</b>	Bowls, buckets, hairbrushes, toothbrushes
<b>Leisure</b>	Toys, sports equipment
<b>Medical equipment/devices</b>	Drug delivery (catheters), sterile packaging
<b>Packaging</b>	Food Trays, Wrapping film

## Plastics and Polymer Education

India, as a major consumer of plastics with a per capita consumption of 15 kg, faces both challenges and opportunities in managing plastic waste and promoting sustainable production. The industry's growth trajectory, expected to triple by 2030, underscores the critical need for innovative solutions and skilled professionals in plastics and polymer science.

Plastindia International University (PIU) recognizes these challenges and opportunities, positioning itself as a pioneer in world-class plastics and polymer education. Programs are designed not only to meet industry demands but also to drive innovation and sustainability within the sector.

By offering specialized courses in chemical recycling, bioplastics, and sustainable materials, PIU prepares future leaders who can spearhead initiatives for sustainable plastic production with a commitment to global competitiveness, PIU provides international exposure and opportunities for students to engage with global initiatives and best practices in plastics and polymer education.

Through these initiatives, PIU aims to foster a new generation of professionals who are not only technically proficient but also dedicated to advancing sustainable practices in the global plastics industry.

## **Growing importance of education in plastics**

Education in polymers and plastics is gaining increasing prominence as the plastics industry continues to expand. Academic institutions and specialised training programs are recognising the growing demand for skilled professionals in this field.

India's plastics sector transcends mere statistics; it is about transforming lives and nurturing hope among its youth. With its remarkable growth trajectory, diverse applications, and dedication to sustainability, this sector not only propels economic expansion but also furnishes young Indians with a ladder to professional success and skills development.

CHAPTER

7

**About Plastindia International University**

## About Plastindia International University

Plastindia International University (PIU) is India's leading institution, merging innovation, sustainability, and academic excellence. Sponsored by the esteemed Plastindia Foundation, PIU signifies the vision of cultivating leaders in the plastics and sustainability sectors. As the first university in India dedicated to Plastics and Sustainability, PIU sets a benchmark for specialized education in technology and management.

At PIU, the traditional education system is excelled by offering experiential learning that adapts to the evolving needs of the industry. The university is committed to delivering industry-relevant programs, ensuring that professionals remain up-to-date with the latest advancements and trends.

Additionally, a key development enhancing the university's accessibility is the construction of a bullet train station near the PIU campus. This advancement will provide students with swift and convenient travel options, facilitating easier commutes and enhancing their overall educational experience. In a significant move towards global collaboration, PIU has formed a technical partnership with the University of Massachusetts Lowell (UML), USA. This alliance seeks to create a world-class institution for Plastics and Polymer technology and processing in India, offering students exceptional exposure to best practices and cutting-edge research on a global scale.

Recognizing the rapid growth and pivotal role of plastics and polymers in the global materials sector, PIU is consistently committed to establishing clear, long-term goals and actionable plans. The programs at PIU are meticulously crafted to align with the evolving demands of the dynamic industry. By integrating cutting-edge research, innovative teaching methodologies, and practical applications, PIU prepares its students to make substantial contributions to the sector's anticipated transformative growth over the next two decades.

PIU's approach emphasizes fostering critical thinking, creativity, and adaptability, ensuring graduates are well-equipped to drive innovation and sustainability across the plastics and polymer industries.



## Sponsoring Body

Established in 1987, Plastindia Foundation is an esteemed institution known for its leadership in nurturing innovation and sustainability within the plastics industry. Under the guidance of President Mr. Ravish Kamath, the foundation is dedicated to promoting excellence and integrity in all its endeavours. Serving as the apex body, it unites major associations, organizations, and institutions committed to advancing plastic technology's frontiers.

With an integrated vision and persistent dedication, the foundation aims to propel India to prominence in the global plastics arena. It aims to position the country as a leading sourcing destination renowned for its exceptional quality and innovation. Plastindia Foundation plays a pivotal role in advancing the industry through various activities and initiatives. These include organizing national and international Exhibitions and Conferences to foster industry development and hosting the prestigious 'Plasticon Awards' to recognize excellence and innovation in plastics across industry, academia, and entrepreneurship.

An integral initiative of the foundation is 'Plastindia Plasticulture,' highlighting the use of plastics in agriculture to enhance farming practices and conserve water. These efforts underscore its commitment to driving innovation and sustainability in the plastics sector.

Determined by a mission of excellence, Plastindia Foundation remains dedicated to fostering positive change, innovation, and growth within the plastics industry. Its goal is to lead the charge towards a future where sustainability, innovation, and progress converge.



### Vision

"To provide World class education and well trained, culturally sensitive technical Human Resource to the Plastics, Polymer and allied industries through Technology and Management courses."

### Mission

"To become a world class research and development centre for imparting education, training, research & innovation in the areas of Plastics and Polymer Industry"



## Positioning of the University

Plastindia International University distinguishes itself as a premier institution dedicated to advancing scientific, technical, and managerial excellence in the plastics sector. Key features include:

- Comprehensive practical training through open-ended laboratory exercises, projects, and tutorial discussions focused on enhancing problem-solving skills.
- Structured industrial training programs that immerse students in real-world industrial environments, providing hands-on experience.
- Emphasis on Modeling and Simulation training to bolster design education, preparing students for complex technical challenges.
- Specialized programs in international trade tailored to deepen understanding of global dynamics within the plastics industry.
- Development of managerial and entrepreneurial skills essential for leadership roles and fostering innovation.
- Unique coursework on family business management in the plastics sector, promoting industry growth and sustainability.

These initiatives underscore PIU's commitment to equipping students with the expertise and practical experience needed to excel in the dynamic and evolving field of plastics technology and management

CHAPTER

# 8

**Meet our Esteemed Partner:  
University of Massachusetts Lowell**

## Meet our Esteemed Partner: University of Massachusetts Lowell

UMass Lowell (UML) is a public research university located in Lowell, Massachusetts, with a branch campus in Haverhill. It's the largest university in the Merrimack Valley and boasts a strong research focus, ranking among "R2: Doctoral Universities – High research activity. The university is governed by a six-member executive cabinet, including and led by the chancellor. The current chancellor is Julie Chen, who was appointed in May 2022. Marty Meehan, former UMass Lowell Chancellor, is currently the president of the entire University of Massachusetts system. Each would follow its own path of expansion through the 20th century. The main campus is situated in Lowell, Massachusetts, about 25 miles northwest of Boston, placing in a vibrant and historic city with easy access to the opportunities and committed to preparing students for work in the real world— solving real problems and helping real people— by providing an affordable, high-quality education.

UMass Lowell's Plastics Engineering program has a storied history, originating from the Lowell Textile School established in 1895 and evolving to meet contemporary demands. Founded in 1954, the program experienced rapid growth driven by increasing demand for skilled professionals. Its distinctive approach integrates engineering principles with hands-on learning and a comprehensive understanding of materials, defining its educational ethos.

The University offers Accreditation Board for Engineering and Technology (ABET) accredited Plastics Engineering program in the U.S., UMass Lowell Plastics Engineering is USA's leading center for Plastics technology.

Various Courses offered by UMass Lowell related to Plastics& Polymer Industry are:

<b>B.S in Chemical Engineering</b>	<b>B.S in Plastics Engineering</b>	<b>B.S in Nano material Engineering</b>
<b>B.S in Mechanical Engineering</b>	<b>M.S in Chemistry and Polymer Science</b>	<b>M.S in Chemical Engineering</b>
<b>M.S in Plastics Engineering</b>	<b>M.S in Mechanical Engineering</b>	<b>Graduate Certificate in Plastics Engineering Fundamentals</b>
<b>Graduate Certificate in Plastics Processing</b>	<b>Graduate Certificate in Plastics Design</b>	<b>Graduate Certificate in Plastics Material</b>

Offering Bachelor of Science degrees alongside Master's and Ph.D. programs with a research emphasis, UMass Lowell has maintained accreditation since 1977. The university prioritizes curriculum modernization and operates cutting-edge facilities through partnerships with leading corporations.

These collaborations create specialized centers dedicated to advancing plastics engineering, supported by an Industrial Advisory Board that ensures alignment with industry trends. With a commitment to excellence and innovation, UMass Lowell's Plastics Engineering program continues to prepare students for future leadership in the field.

## Graduate Certificate Programmes

Plastindia International University (PIU) offers a comprehensive collection of specialized Graduate Certificate Programmes designed specifically for working professionals in the Plastics Engineering and Technology sector.

These programmes, precisely crafted by industry experts and delivered by skilled faculty, cover a wide range of critical areas. These courses are offered in collaboration with the University of Massachusetts, Lowell, ensuring a world-class educational experience.

## Collaboration of PIU and UML

Plastindia International University (PIU) and the University of Massachusetts Lowell (UML), USA, have entered into a transformative partnership aimed at establishing world-class engineering programs at PIU. This collaboration with UML's Francis College of Engineering is set to elevate PIU's capabilities in plastics technology education, research, innovation, and entrepreneurship. Expert guidance from UML is shaping the development of advanced laboratories, academic structures, curriculum, and accreditation standards at PIU's School of Engineering, marking a significant leap forward in plastic engineering education.



PIU has signed an MoU with University of Massachusetts at Lowell (UML), USA on 7th October 2016 which will help establish up PIU in following ways:

- Curriculum and module design
- Student-Faculty Exchange
- Faculty development through UML Training.
- Peer Mentorship, and
- Webinar series in Technical Partnership

CHAPTER

# 9

**Our Commitment:  
Social and Academic Mission**

Plastindia International University (PIU), founded in 2016 and located in Vapi, Gujarat, India, is a unique institution dedicated to advancing the science and technology of plastics. Fundamental to PIU's existence is its unwavering commitment to its social and academic mission which emphasizes the importance of making a positive impact on society.

Beyond academics, PIU is committed to pioneering the transformation of India's plastics industry. PIU's social mission is straightforward: seeking positively influence how plastics are utilized and managed in society and dedication lies in innovating towards safer, more efficient, and environmentally friendly plastics solutions.

## Social Mission

Underpinning PIU's social mission is a commitment to equitable access to high-quality, affordable higher education for all, including Persons with Disabilities (PwD). The university empowers every student, regardless of background or physical abilities, to pursue advanced education and reach their full potential.

Fundamentally, PIU aims to generate knowledge that drives social progress and well-being. Through cutting-edge research, the university addresses both technical and societal challenges, nurturing innovative solutions with direct positive impacts on communities. This dedication ensures PIU remains a leader in advancements benefiting society at large.

PIU integrates vocational education, training, and skilling into its higher education programs, providing students with both theoretical knowledge and practical skills. This holistic approach prepares graduates to be adaptable and versatile in the workforce.

With a focus on creating industry-ready and entrepreneurial human resources, PIU enhances the quality of life and standard of living for individuals. The university fosters entrepreneurship and industry readiness, equipping graduates to drive innovation and development within the plastics industry and beyond.

PIU integrates vocational education, training, and skilling into its higher education programs, providing students with both theoretical knowledge and practical skills. This holistic approach prepares graduates to be adaptable and versatile in the workforce.

With a focus on creating industry-ready and entrepreneurial human resources, PIU enhances the quality of life and standard of living for individuals. The university fosters entrepreneurship and industry readiness, equipping graduates to drive innovation and development within the plastics industry and beyond.



PIU is committed to reducing inequalities and promoting gender parity, fostering diversity and inclusivity across its programs and activities. The university actively promotes environmental awareness and contributes to achieving Sustainable Development Goals (SDGs), aiming for a more equitable and sustainable society. Embracing internationalization in higher education, PIU prioritizes global mobility for students, learners, and the workforce. By establishing partnerships with global institutions and facilitating international exchanges, PIU enhances student learning experiences and broadens perspectives, preparing them for success in the global marketplace.

Through its comprehensive social mission, PIU remains dedicated to higher education leadership, fostering a better future for all through innovation, inclusivity, and sustainability.



## Academic Mission

PIU's academic mission revolves around promoting comprehensive education through multi-disciplinarity, cross-disciplinarity, and interdisciplinarity. Recognizing the interconnected nature of modern learning, PIU ensures students receive a well-rounded and integrated education that prepares them to engage meaningfully across diverse fields of knowledge. The university is dedicated to achieving key learning outcomes by focusing on core disciplinary knowledge and a robust curriculum, equipping students with deep insights into their chosen fields and practical skills essential for real-world applications.

Central to PIU's academic mission is character development, emphasizing ethical values, intellectual curiosity, scientific inquiry, creativity, and a commitment to service.

PIU places a strong emphasis on cultivating critical skills and competencies critical for success in today's world. These include critical thinking, problem-solving, creativity, innovation, analytical and adaptive thinking, design thinking, and computational thinking. Additionally, the university nurtures social intelligence, cross-cultural competence, proficiency in new media, virtual collaboration, decision-making, conflict resolution, and negotiation skills. By honing these competencies, PIU prepares students for lifelong learning and empowers them to thrive in an evolving global landscape.

PIU's social and academic mission paints a vivid picture of an institution dedicated to excellence. Their commitment extends beyond imparting knowledge; it's about shaping a future-ready workforce equipped to tackle the challenges of the plastics industry.

This commitment ensures that PIU not only educates but also inspires and equips individuals to make a lasting impact on global sustainability challenges.

CHAPTER

# 10

**Aligning with  
National Education Policy (NEP) 2020:  
Strategic Goals**

The National Education Policy (NEP) 2020 in India envisions Higher Education Institutions (HEIs) as transformative centers of learning, offering multidisciplinary programs. These initiatives aim to provide students with a holistic education that fosters their overall development and prepares them to meet the challenges of the 21st century, while also grounding them in Indian cultural values.

These programs will integrate diverse fields of study, enabling students to explore varied subjects and gain a comprehensive understanding of knowledge. Embracing multidisciplinary education, HEIs can cultivate an environment conducive to critical thinking, creativity, and problem-solving skills among students.



## NEP 2020's Focus on Interdisciplinary and Industry-Oriented Learning

- NEP 2020 emphasizes a shift from routine learning to a more holistic approach that integrates various disciplines.
- NEP 2020 encourages industry collaboration to ensure graduates possess relevant skills.

## NEP 2020's Flexibility Benefits PIU

- PIU empowers to tailor its programs to address specific areas within the plastics industry, like plastic recycling or bioplastics development.
- The emphasis on multiple entry and exit points in NEP 2020 aligns with PIU's potential to offer short-term certificate courses for upskilling professionals or cater to students seeking specific industry certifications.
- PIU's potential role here could involve incorporating elements of sustainable practices throughout the curriculum, along with courses on communication, teamwork, and ethical considerations in the plastics industry.

## PIU's alignment with NEP 2020

### A. Academic Bank of Credit

---

- This registration enables acceptance of multidisciplinary courses, credit transfers, and credit acceptance. Universities registered at the ABC can facilitate the acceptance of credits earned by students from different disciplines and fields.
- It promotes flexibility and mobility in higher education and registration at the ABC provides students with more options to tailor their educational journey according to their interests and career goals.
- PIU has met all the requirements and has approved for registration at Academic Bank of Credit and signifies PIU's commitment to ensure the transparency, accessibility and integrity of ABC record for students and stakeholders.

### C. Internationalization of Education

---

- The internationalization of education should be a priority. This means they should work on creating partnerships, collaborations, and exchange programs with international schools according to NEP 2020.
- PIU has signed memorandum of understanding (MoU) with the University of Massachusetts at Lowell (UML), USA as a technical partnership which marks a significant step in enhancing PIU's educational framework and international collaboration

### B. Integrating with Platforms like SWAYAM and MOOCs

---

- The National Education Policy (NEP) 2020, guided by the UGC (University Grants Commission), introduces a transformative approach to higher education through recognized online courses. Leveraging platforms like SWAYAM.
- SWAYAM, a key initiative under NEP-2020, hosts a wide array of Massive Open Online Courses (MOOCs) from various institutions. These courses are designed to be flexible and accessible, catering to diverse learning needs across disciplines. By integrating SWAYAM courses into degree requirements, NEP-2020 encourages universities to track student participation and completion, ensuring these online learning experiences contribute effectively to academic credentials.
- PIU has committed for providing access to Massive Open Online Courses (MOOCs) through SWAYAM and SWAYAM Prabha for students as well as faculty members. These courses will serve as Supplementary Courses, enriching educational offerings and promoting continuous learning.

### D. Enhancing Faculty Skills for Multidisciplinary Education

---

- According to section 13.1 of the National Education Policy (NEP) 2020, the quality and engagement of the faculty are the most critical factors for the success of higher education institutions.

Overall, Plastindia International University is well-positioned to play a leading role in implementing NEP 2020's vision for plastics education in India. Their unique focus, industry collaboration, and commitment to innovation make them a valuable asset in shaping a future-ready plastics workforce.

CHAPTER

11

**Giving Back: Corporate Social Responsibility**

## Giving Back: Corporate Social Responsibility

Corporate Social Responsibility (CSR) refers to organizations that integrates social and environmental concerns in its operations and interactions with stakeholders. It involves activities and initiatives aimed at creating positive impacts on society while ensuring sustainable development.

In essence, CSR underscores the responsibility of organizations, including universities, to operate in a manner that balances economic success with social and environmental impact. By embracing CSR principles, organizations contribute to building a more inclusive, sustainable, and ethical global community.

Universities engage in CSR to fulfil their ethical obligations, enhance their reputation, and contribute to addressing societal challenges. CSR activities by universities often include promoting education access, supporting local communities through economic development and social programs, fostering environmental sustainability, and advocating for ethical practices. By integrating CSR into their operations, universities play a crucial role in shaping a more inclusive, sustainable, and socially responsible society.

For Plastindia International University CSR extends beyond academic pursuits to encompass broader societal contributions. By prioritizing CSR, PIU not only enhances its reputation as a socially responsible institution but also fosters a deeper connection with its community and stakeholders.

Through initiatives focused on education, environmental sustainability, rural development, gender equality, and empowerment of marginalized groups, PIU demonstrates its commitment to making a meaningful and lasting difference in the lives of people and the environment.

As a socially responsible institution, we have embarked on various initiatives to foster positive change and address pressing societal challenges.

**Table 1:** Common CSR practices performed by universities

<b>Organizational Governance</b>	<ul style="list-style-type: none"> <li>• Accountability</li> <li>• Transparency</li> <li>• Providing Facts and Figures</li> </ul>
<b>Human Rights</b>	<ul style="list-style-type: none"> <li>• Diversity</li> </ul>
<b>Labour Practices</b>	<ul style="list-style-type: none"> <li>• Employment benefits and compensation</li> <li>• Learning and development</li> <li>• Providing a healthy work/Life balance</li> </ul>
<b>The Environment</b>	<ul style="list-style-type: none"> <li>• Preserving environment</li> <li>• Offering specific academic programs</li> </ul>
<b>Fair Operating Practices</b>	<ul style="list-style-type: none"> <li>• Responsible involvement in the public</li> <li>• Promoting social responsibility</li> </ul>
<b>Student Issues</b>	<ul style="list-style-type: none"> <li>• Providing sufficient information for current and prospective students</li> </ul>
<b>Community Involvement and Development</b>	<ul style="list-style-type: none"> <li>• Providing grants for community projects</li> <li>• Providing fund and support to generate and preserve affordable housing</li> </ul>

## PIU's Strategy towards Corporate Social Responsibility

Plastindia International University is committed to promoting education across diverse levels, including tailored special education programs for differently-abled individuals. It prioritizes enhancing vocational skills among children, women, and the elderly, empowering them with practical abilities that boost their employability and socio-economic status. Additionally, recognizing the significance of environmental stewardship, PIU shall implement practices to minimize our environmental footprint, promotes renewable energy sources, and advocates for sustainable practices within our campus and community.

PIU to engage in sustainable rural development projects, focusing on uplifting nearby communities by enhancing infrastructure, providing access to clean water and sanitation, promoting best agricultural practices, and supporting local economic initiatives. Furthermore, PIU is dedicated to promoting gender equality and women's empowerment, advocating for equal opportunities in education, employment, and leadership roles. Through education and skill development programs, PIU aims to reduce inequalities faced by socially and economically disadvantaged groups, fostering a more inclusive and equitable society.

Collaborations are essential for PIU's to take an strategic initiatives in health, education, community development, and environmental conservation. By partnering with stakeholders, we aim to innovate and implement impactful solutions for community well-being. Moreover, PIU supports inclusive education through financial aid initiatives, offering fee concessions and scholarships to deserving students from economically disadvantaged backgrounds. These efforts empower talented individuals who exhibit academic excellence but lack the financial means to pursue higher education, thereby fostering a diverse and capable student body at PIU.

PIU is dedicated to advancing education and employability opportunities, with a specific focus on underprivileged communities. Initiatives include mentorship programs, scholarships, and skill-development workshops aimed at enhancing access to quality education and preparing individuals for successful careers. By empowering students with the necessary skills and knowledge, PIU aims to bridge socio-economic gaps and foster a skilled workforce that contributes positively to society.

In line with our commitment to community engagement, PIU integrates mandatory service learning into its curriculum. This approach allows students to apply their academic learning to real-world community challenges, promoting civic responsibility and practical problem-solving skills. Through these experiences, students gain a deeper understanding of social issues and develop a sense of empathy and leadership that prepares them for active citizenship.

PIU also prioritizes environmental stewardship through comprehensive educational programs focused on plastics awareness. These initiatives encompass structured courses and training sessions designed to educate students and the wider community about sustainable plastic usage and effective waste management practices. By raising awareness and promoting responsible behaviour, PIU empowers individuals to make informed choices that contribute to environmental sustainability and reduce the impact of plastic pollution on our planet. Through these interconnected efforts in education, community service learning, and environmental awareness, PIU is committed to nurturing socially responsible leaders who are equipped to address global challenges and contribute to the well-being of communities and the environment.

PIU's strategy is rooted in an ongoing commitment to corporate social responsibility (CSR). The goal is to empower students to excel not only as successful professionals but also as responsible and engaged global citizens. Through these integrated efforts, PIU endeavours to cultivate a community that values ethical leadership, social responsibility, and meaningful contributions to the global community.

CHAPTER

# 12

**Leadership and Governance**

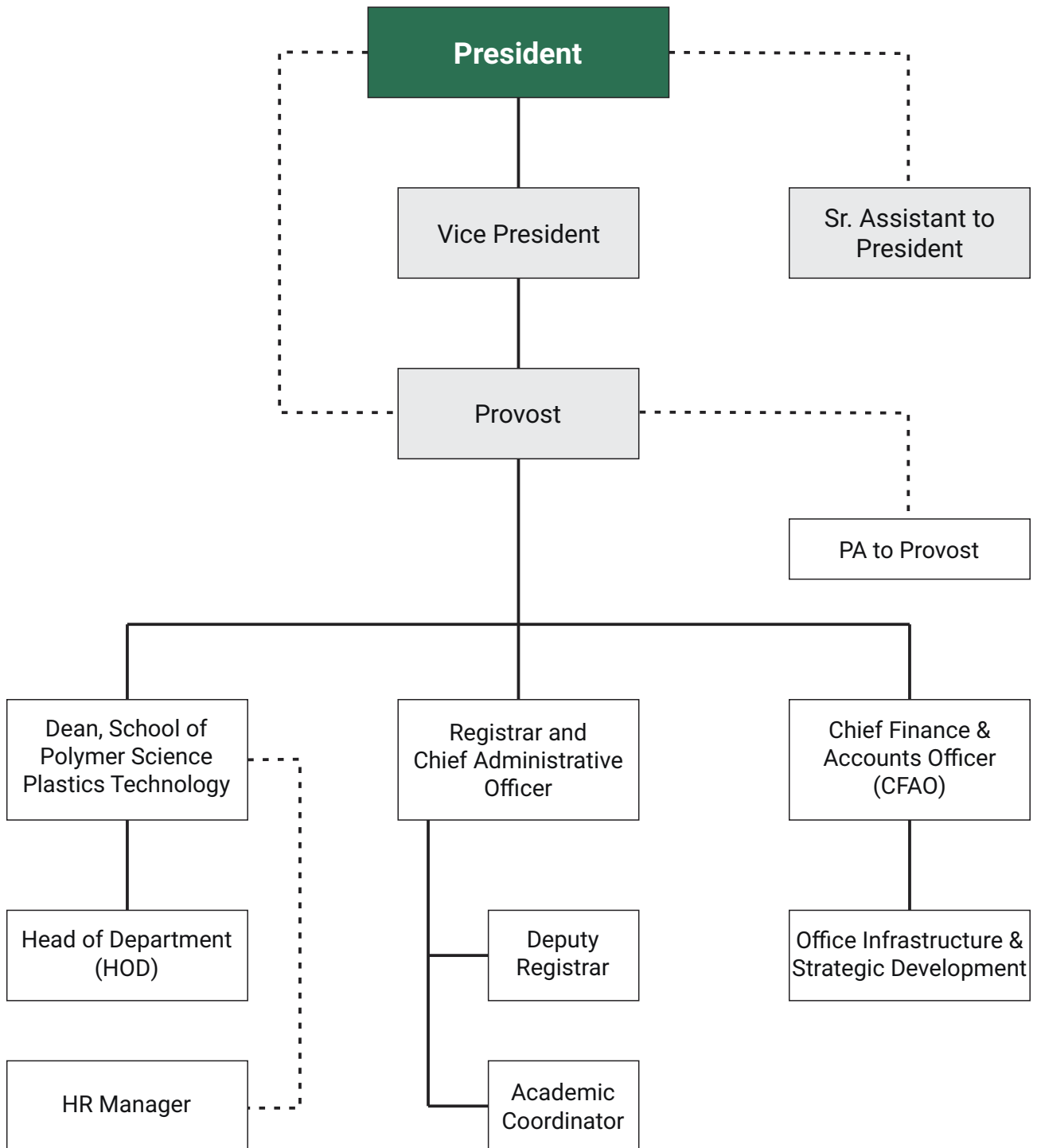
## Leadership and Governance

The Plastindia International University (PIU) is guided by a strong governance structure composed of several key committees. These include the Leadership Team, Committee Structure, the Governing Body, and the Board of Management. The Leadership Team provides strategic direction and oversight for the University's day-to-day operations, ensuring that PIU's vision and mission are effectively pursued. The Governing Body, comprising distinguished members from various fields, offers critical insights and directives on major policy decisions, fostering the university's long-term growth and sustainability. Meanwhile, the Board of Management focuses on administrative and operational aspects, ensuring the seamless implementation of strategies and initiatives. Together, these committees work collaboratively to steer PIU towards excellence in education and research, maintaining its commitment to innovation and industry relevance.

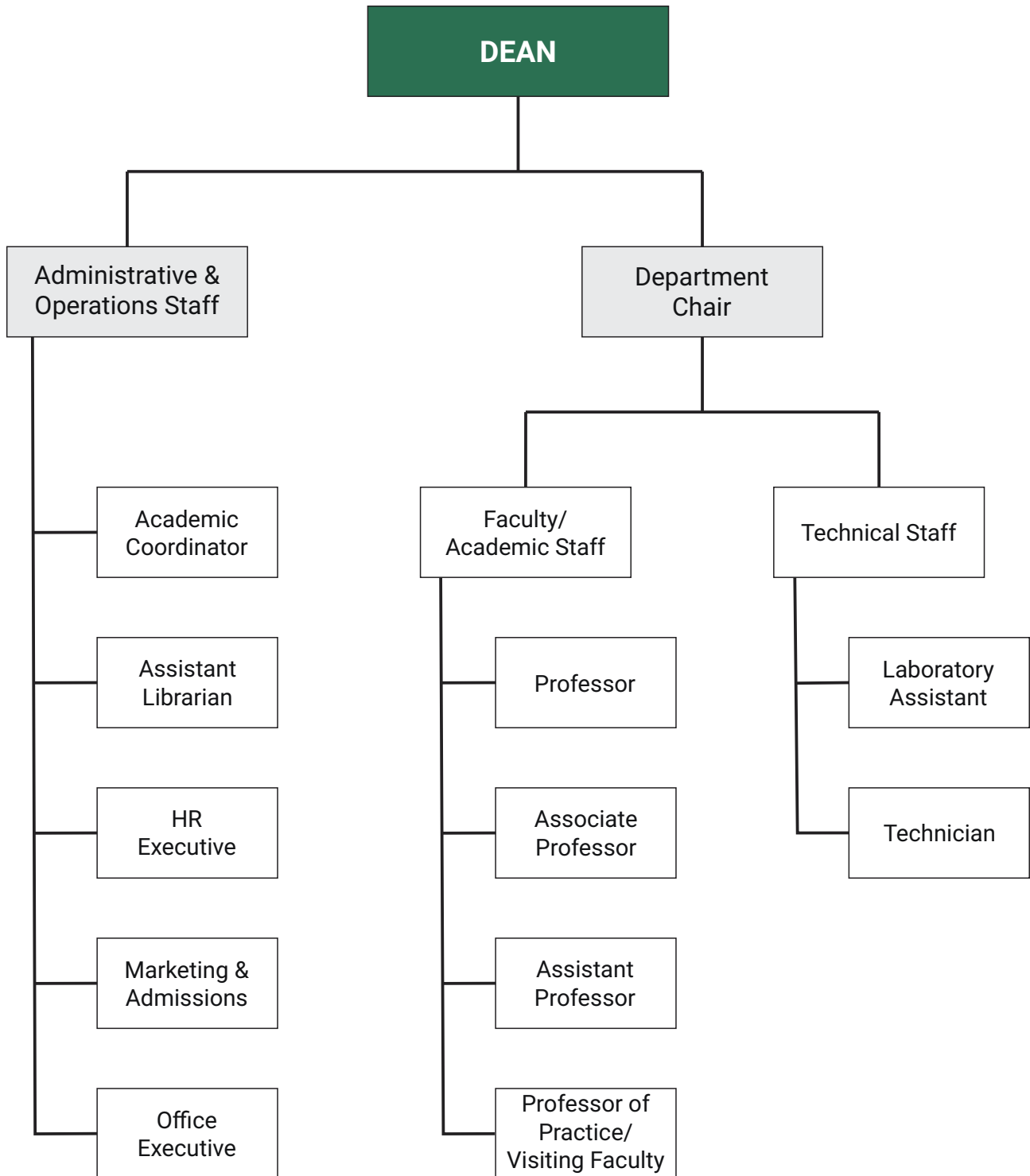


### 12.1 Organogram

The different level organogram of PIU has been designed which includes high level organogram (Higher Management of the University) and School of Polymer Science and Plastics Technology Organogram is showcased below:



School of Polymer Science and Plastics Technology



## 12.2 Key Leadership

The Plastindia International University (PIU) is guided by a strong governance structure composed of several key committees. These include the Leadership Team, the Governing Body, and the Board of Management. The Leadership Team provides strategic direction and oversight for the University's day-to-day operations, ensuring that PIU's vision and mission are effectively pursued.

The Governing Body, comprising distinguished members from various fields, offers critical insights and directives on major policy decisions, fostering the university's long-term growth and sustainability. Meanwhile, the Board of Management focuses on administrative and operational aspects, ensuring the seamless implementation of strategies and initiatives. Together, these committees work collaboratively to steer PIU towards excellence in education and research, maintaining its commitment to innovation and industry relevance.



**Padma Vibhushan,  
Dr. Raghunath A Mashelkar**  
Chief Mentor, PIU



**Shri. M. P. Taparia**  
President, PIU, Chairman



**Dr. Raju Desai**  
Vice President, PIU,  
Member



**Dr. Kiran Patil**  
Dean,  
School of Engineering



**Shri Viral Vaishnav**  
CAO, I/C Registrar,  
Member

### 12.3 Committee Structure

PIU's committee structure not only distributes responsibilities among its various bodies but also ensures that decisions are well-informed and aligned with the university's strategic objectives. By including representation from diverse stakeholders such as faculty, staff, students, and external experts, the structure promotes inclusivity and incorporates a wide range of perspectives into decision-making processes. This approach fosters a culture of transparency and accountability, reinforcing PIU's commitment to excellence in both academic pursuits and administrative operations.

#### The Governing Body

The Governing Body of PIU comprises distinguished individuals from academic, industry, and the community at large. This body sets the strategic direction of the university, oversees its financial health, and ensures compliance with legal and regulatory requirements. Members of the Governing Body bring diverse expertise and perspectives, contributing to robust decision-making processes that align with PIU's mission and values.

Sr No.	Name	Designation
1	<b>Shri. M. P. Taparia</b>	President, PIU, Chairman
2	<b>Dr. Raju Desai</b>	Vice President, PIU, Member
3	<b>Shri Ravish Kamath</b>	President, Plastindia Foundation
4	<b>Shri Jigish Doshi</b>	Imm. Past President, Plastindia Foundation, Member
5	<b>Shri Jayesh Rambhia</b>	Managing Director, Premsons Plastic, Member
6	<b>Shri K. K. Seksaria</b>	Managing Director, Uma Plastics Ltd., Member
7	<b>Shri Kamal Nanavaty</b>	President Strategy Development, Reliance Industries Ltd., Member
8	<b>Shri Achal Thakkar</b>	Managing Director, Tipco Group, Member
9	<b>Shri Mukesh Kumar, IAS</b>	Principal Secretary, Higher & Technical Education, Govt. of Gujarat, Member
10	<b>Shri Viral Vaishnav</b>	CAO, I/C Registrar, Member

## Board of Management

The Board of Management plays a crucial role in the overall management of PIU. Composed of senior administrative leaders and sometimes external stakeholders, the Board oversees operational aspects such as finance, human resources, facilities management, and strategic planning implementation. It ensures efficient resource allocation and the execution of policies that support the university's academic and administrative goals.

Sr No.	Name	Designation
1	<b>Shri. M. P. Taparia</b>	President, PIU, Chairman
2	<b>Dr. Raju Desai</b>	Vice President, PIU, Member
3	<b>Shri Kamal Nanavaty</b>	President Strategy Development, Reliance Industries Ltd., Member
4	<b>Shri Achal Thakkar</b>	Managing Director, Tipco Group, Member
5	<b>Dr. Kiran Patil</b>	Dean, School of Engineering
6	<b>Dr. Palak Sheth</b>	Higher Education Expert, Member
7	<b>Shri Viral Vaishnav</b>	CAO, I/C Registrar, Member

## Academic Council

The Academic Council at PIU represents the faculty and academic staff responsible for shaping the university's educational policies and programs. This council establishes and reviews academic standards, approves new courses and programs, and promotes innovation in teaching and research. The Academic Council ensures the quality and relevance of PIU's academic offerings, fostering an environment conducive to learning and intellectual growth.

Sr No.	Name	Designation
1	<b>Shri. M. P. Taparia</b>	President, PIU, Chairman
2	<b>Dr. Raju Desai</b>	Vice President, PIU, Member

<b>Sr No.</b>	<b>Name</b>	<b>Designation</b>
3	<b>Shri Achal Thakkar</b>	Managing Director, Tipco Group, Member
4	<b>Shri Kamal Nanavaty</b>	President Strategy Development, Reliance Industries Ltd., Member
5	<b>Dr. Palak Sheth</b>	Higher Education Expert, Member
6	<b>Shri. Hemant Minocha,</b>	Chairman, Rajiv Plastics Private Limited, Mumbai
7	<b>Prof Anup Ghosh,</b>	Professor (Emeritus), Indian Institute of Technology, Delhi
8	<b>Shri. Amit Sheth,</b>	Chairman, Sky Domes, India
9	<b>Prof. Shashank T Mhaske,</b>	Prof. ICT, Mumbai
10	<b>Dr. Aniruddha Chatterjee</b>	Associate Prof, PIU
11	<b>Dr. Kiran Patil</b>	Dean, School of Engineering, PIU
12	<b>Mr. Manan Sheth</b>	Project In- Charge, PIU
13	<b>Shri. Viral Vaishnav</b>	CAO, Registrar, PIU

## 12.4 Policy Pillars

The policy pillars of a university serve as the fundamental principles guiding its strategic direction. These pillars encompass areas such as community support, excellence in education, high-impact research, and strategic partnerships. By adhering to these principles, universities aim to create an environment conducive to learning, innovation, and societal impact.

These policies play a crucial role in structuring strategies that contribute significantly to the improvement of both the university as an institution and the overall student experience. Each policy serves as a foundational framework that guides decision-making and operations across various aspects of university life.

- **Human Resource (HR) Policy**

PIU's HR policy outlines guidelines and procedures related to the management of its human capital. It ensures fair treatment of employees, defines recruitment practices, sets compensation standards, outlines performance evaluation criteria, and establishes disciplinary procedures. These policies are essential to attract and retain talented faculty and staff, promote a positive work environment, and ensure compliance with labour laws.

- **Admissions Policy**

This policy governs the admission process for students seeking entry into the university. It defines eligibility criteria, application processes, and selection procedures. By adhering to this policy, PIU maintains credibility and attract qualified students. Admission policy helps to maintain academic standards, supports diversity goals, and aligns with the educational mission of the university.

- **Procurement Policy**

The procurement policy regulates PIU's procedure for acquiring goods and services. It focusses on cost-effectiveness, transparency, and ethical standards in purchasing practices. It defines procedure at PIU for vendor selection, contract management, and expenditure approval.

- **Information Technology (IT) Policy**

IT policy governs the use of technology resources within the PIU. The IT policy ensures that issues such as data security, acceptable use of IT equipment and networks, software licensing, and privacy concerns are protected. IT policy at PIU safeguards sensitive information, prevents cyber threats, and supports academic & administrative system.

- **Finance Manual**

The finance manual at PIU outlines financial management practices and procedures within the university. The manual ensures financial transparency, compliance with regulatory standards, effective resource allocation, and sound financial decision-making to support PIU's sustainability and growth.

- **Brand Guidelines**

For presenting Plastindia International University to the public and to maintain consistency in its visual and messaging identity, the brand guidelines for PIU were prepared. It details on rules for PIU logo usage, typography, colours, tone of voice, and marketing materials.

- **Student Handbook**

The PIU student handbook is a compilation of rules, policies, and expectations governing student conduct, rights, and responsibilities. It offers information on academic regulations, disciplinary procedures, campus services, and student life.

- **Faculty Handbook**

The PIU faculty handbook outlines policies and procedures relevant to faculty members, including academic guidelines, professional expectations, research standards, tenure criteria, and faculty development opportunities. It highlights the rights and responsibilities of faculty at PIU, promotes faculty welfare and career advancement, fosters a supportive academic community, and maintains academic integrity and excellence in teaching and research.

- **DPR on Centre of Excellence for Sustainability**

The DPR on Centre of Excellence for Sustainability provides a detailed report on the progress, challenges, and future plans of centre within the Plastindia International University.

These policies and guidelines collectively ensure that PIU can operate efficiently, upholds its values and standards, fosters a conducive learning and working environment, and meets its educational and organizational goals effectively.



## 12.5 Stakeholder Inclusion

Stakeholder inclusion is pivotal for fostering a collaborative and supportive environment that aligns diverse perspectives and interests toward common goals. Each stakeholder group brings unique insights, resources, and expectations that influence the institution's strategic direction, policies, and operational decisions.

### 12.5.1 Plastindia Foundation (PIF)

Being the sponsoring body of PIU, the Plastindia Foundation has always supported and guided PIU during the stages of PIU establishment. As a stakeholder, the inclusion of PIF holds utmost importance for PIU.

The association members of PIF, including founder members, associate members, and constituent members, have also been supportive and contribute to PIU's academic and professional landscape. Their involvement extends beyond advisory roles to actively fostering opportunities for internships and placements that benefit PIU students. The member associations of Plastindia Foundation comprises of:

#### Founder Members

<b>CIPET</b>	: Central institute of Plastics and Engineering, Chennai
<b>AIPMA</b>	: The All-India Plastics Manufacturers' Association Mumbai
<b>PLEXCONCIL</b>	: The Plastics Export Promotion Council, Mumbai
<b>IPF</b>	: Indian Plastics Federation. Kolkata
<b>GSPMA</b>	: Gujarat State Plastics Manufacturers Association, Ahmedabad
<b>OPPI</b>	: Organizations of Plastics Processors of India, Mumbai
<b>IPi</b>	: Indian Plastics Institute Mumbai

#### Constituent Members

<b>PMMAI</b>	: Plastics Machinery Manufacturers Association of India
<b>CPMA</b>	: Chemicals & Petrochemicals Manufacturers' Association, India

#### Associate Members

<b>SPMA</b>	: Saurashtra Plastics Mfrs. Association, Rajkot
<b>AIFTMA</b>	: All India Flat Tape Mfrs. Association, Bangalore
<b>TAAPMA</b>	: Telangana and Andhra Pradesh Plastics Manufacturers Association
<b>KPMA</b>	: Kerala Plastics Manufacturers Association
<b>TAPMA</b>	: The Tamil Nadu Plastics Manufacturers Association, Chennai
<b>KSPA</b>	: Karnataka State Plastics Association

PIF comprising representatives from diverse industry associations and organizations, serves as a vital link between industry requirements and Plastindia International University's academic offerings. This partnership ensures that PIU's courses remain aligned with current industry demands, equipping students with the requisite skills and knowledge sought after in the professional world.

PIF's guidance plays a pivotal role in shaping PIU's curriculum to reflect emerging trends and technological advancements in the field. Through PIF's extensive network, PIU students and faculty gain access to valuable opportunities such as internships, placements, and collaborative projects within industry settings. PIF's commitment to fostering innovation also opens doors for research grants and joint initiatives that drive forward-thinking research agendas at PIU, bolstering its reputation as a hub of academic and industrial collaboration. Furthermore, to foster active inclusion with stakeholders PIU and PIF hosted a significant event "Industry Leaders Meet" held recently in Mumbai. This event serves as a crucial platform for stakeholders to stay informed about PIU's academic advancements and activities. It provides a forum where industry leaders, including dignitaries can interact, exchange ideas, and collaborate on initiatives that bridge academic and industry

### 12.5.2 Umass Lowell (UML)

UMass Lowell (UML) is a public research university located in Lowell, Massachusetts, with a branch campus in Haverhill. It's the largest university in the Merrimack Valley and boasts a strong research focus. UMass Lowell's Plastics Engineering program has a storied history, originating from the Lowell Textile School established in 1895 and evolving to meet contemporary demands.



UMass Lowell's inclusion as a stakeholder significantly enhances PIU's educational standards and global reputation, particularly in the field of plastics engineering. Through this collaboration, PIU ensures that students benefit from education that is not only current but also directly applicable to contemporary industry needs. Moreover, joint research initiatives between UMass Lowell and PIU drive innovation in plastics engineering, facilitating exploration into new technologies, materials, and manufacturing processes. These collaborative efforts not only expand the frontiers of knowledge but also contribute to practical solutions that address global challenges in sustainability and technological advancement within the plastics industry. Together, UMass Lowell and PIU forge a path towards educational excellence and research innovation, preparing students and researchers alike to lead and thrive in the field of plastics engineering.

Potential faculty exchange programs between UMass Lowell and PIU facilitate the sharing of knowledge, teaching methods, and research insights. This exchange enriches the academic environment at both institutions, exposing students to diverse perspectives and enhancing their educational experience.

PIU integrates UMass Lowell's expertise to enrich curriculum offerings, equipping students with cutting-edge skills and practical experience crucial for their careers. Furthermore, joint efforts foster strong connections with the plastics industry, facilitating valuable internship, co-op, and job placement opportunities for students. This industry engagement not only strengthens students' professional development but also solidifies PIU's standing as a premier institution in plastics engineering education. By combining academic rigor with practical industry collaboration, UMass Lowell and PIU empower future leaders in the field to drive innovation and meet industry demands effectively.

This strategic partnership exemplifies the power of stakeholder engagement in elevating educational institutions to achieve excellence and relevance in today's competitive academic and industrial landscapes, ensuring that both institutions remain at the forefront of advancing knowledge and driving innovation in plastics engineering.

CHAPTER

13

**Financial Strategy and  
Resource Management**

## Financial Strategy and Resource Management

One of the most crucial strategies for developing a successful educational institution is devising a robust financial plan that ensures sustainability for the coming years. At Plastindia International University (PIU), we have meticulously crafted a comprehensive financial plan that accounts for all variable expenses projected over the next decade. This financial strategy is designed to support our long-term goals, facilitating continuous growth and stability.



## 13.1 Financial Plan for 10 Years

By forecasting future expenses and revenues, PIU aims to maintain financial health, enabling us to invest in state-of-the-art facilities, advanced academic programs, and innovative research initiatives. Our commitment to financial sustainability underscores our dedication to providing a world-class educational experience, ensuring that PIU remains a leading institution in the field of plastics and sustainability education.

### 13.1.1 Students' Strength for 10 Years

The student enrolment numbers at PIU play a pivotal role in shaping the financial dynamics of our university's planning. As we develop and implement our financial strategies, understanding and projecting student strength across various schools within PIU is essential. These projections not only influence budgeting and resource allocation but also impact the overall financial health and sustainability of the institution. Detailed below are the anticipated student strengths for each school at PIU over the next 10 years, providing a comprehensive view of our growth trajectory and ensuring that our financial planning is aligned with our academic and infrastructural goals. The students' strength has been presented in different way to have a better idea such as School wise Students' Strength, Program wise Students' Strength and School wise Program Students' Strength.

A		School wise Students' Strength									
Sr. No.	Name of School	PHASE 1					PHASE 2				
		2024-25	2025-26	2026-27	2027-28	2028-29	2029-30	2030-31	2031-32	2032-33	2033-34
		A.Y.1	A.Y.2	A.Y.3	A.Y.4	A.Y.5	A.Y.6	A.Y.7	A.Y.8	A.Y.9	A.Y.10
1	School of Polymer Science and Plastics Technology	60	120	300	522	779	939	1,123	1,343	1,514	1,649
2	School of Entrepreneurship and Innovation	-	-	-	60	180	305	430	495	620	690
3	Centre of Excellence in Sustainability	50	120	145	170	195	220	245	270	295	320
4	School of Continuing Education	10	15	60	105	150	180	180	180	225	255
	<b>Total</b>	<b>120</b>	<b>255</b>	<b>505</b>	<b>857</b>	<b>1,304</b>	<b>1,644</b>	<b>1,978</b>	<b>2,288</b>	<b>2,654</b>	<b>2,914</b>

B		Type of Program Wise Students' Strength									
Sr. No.	Type of Programs	PHASE 1					PHASE 2				
		2024-25	2025-26	2026-27	2027-28	2028-29	2029-30	2030-31	2031-32	2032-33	2033-34
		A.Y.1	A.Y.2	A.Y.3	A.Y.4	A.Y.5	A.Y.6	A.Y.7	A.Y.8	A.Y.9	A.Y.10
1	Certificate	10	15	60	105	150	180	180	180	225	255
2	Under Graduate (Diploma)	-	-	60	120	180	180	180	180	180	180
3	Graduate (B. Tech)	60	120	240	360	510	660	810	960	1,080	1,200
4	Post Graduate (Masters)	-	-	-	102	264	384	528	648	804	864
5	Doctoral (PhD)	-	-	-	-	5	20	35	50	70	95
6	Short Term + Seminars	50	120	145	170	195	220	245	270	295	320
	<b>Total</b>	<b>120</b>	<b>255</b>	<b>505</b>	<b>857</b>	<b>1,304</b>	<b>1,644</b>	<b>1,978</b>	<b>2,288</b>	<b>2,654</b>	<b>2,914</b>

C		School wise Program Students' Strength									
1	School of Polymer Science and Plastics Technology	PHASE 1					PHASE 2				
Sr. No.	Name of Programmes	2024-25	2025-26	2026-27	2027-28	2028-29	2029-30	2030-31	2031-32	2032-33	2033-34
		A.Y.1	A.Y.2	A.Y.3	A.Y.4	A.Y.5	A.Y.6	A.Y.7	A.Y.8	A.Y.9	A.Y.10
1	Diploma in Plastic Engineering	-	-	60	120	180	180	180	180	180	180
2	B. Tech in Plastic and Polymer Engineering	60	120	180	240	270	300	360	420	450	480
3	B. Tech in Chemical Engineering	-	-	60	120	180	240	270	300	360	420
4	B. Tech in Mechanical Engineering	-	-	-	-	60	120	180	240	270	300
5	M. Tech in Plastic and Polymer Engineering	-	-	-	12	24	24	24	30	36	36
6	M. Tech in Chemical Engineering	-	-	-	-	-	-	12	24	24	24
7	M. Tech in Mechanical Engineering	-	-	-	-	-	-	12	24	24	24
8	M. Sc in Polymer Sciences	-	-	-	30	60	60	60	90	120	120
9	PhD	-	-	-	-	5	15	25	35	50	65
	<b>Total</b>	<b>60</b>	<b>120</b>	<b>300</b>	<b>522</b>	<b>779</b>	<b>939</b>	<b>1,123</b>	<b>1,343</b>	<b>1,514</b>	<b>1,649</b>

2	School of Entrepreneurship and Innovation	PHASE 1					PHASE 2				
Sr. No.	Name of Programmes	2024-25	2025-26	2026-27	2027-28	2028-29	2029-30	2030-31	2031-32	2032-33	2033-34
		A.Y.1	A.Y.2	A.Y.3	A.Y.4	A.Y.5	A.Y.6	A.Y.7	A.Y.8	A.Y.9	A.Y.10
1	MBA in Entrepreneurship/ HR/ Finance/ Marketing/ International Business/ Technology Operations & MIS	-	-	-	60	120	180	240	240	240	240
2	Integrated MBA	-	-	-	-	60	120	180	240	360	420
3	PhD in Management	-	-	-	-	-	5	10	15	20	30
	<b>Total</b>				<b>60</b>	<b>180</b>	<b>305</b>	<b>430</b>	<b>495</b>	<b>620</b>	<b>690</b>

3	Centre of Excellence in Sustainability	PHASE 1					PHASE 2				
Sr. No.	Name of Programmes	2024-25	2025-26	2026-27	2027-28	2028-29	2029-30	2030-31	2031-32	2032-33	2033-34
		A.Y.1	A.Y.2	A.Y.3	A.Y.4	A.Y.5	A.Y.6	A.Y.7	A.Y.8	A.Y.9	A.Y.10
1	Short Term Courses	-	20	20	20	20	20	20	20	20	20
2	Seminars/ Webinars/ Workshops	50	100	125	150	175	200	225	250	275	300
	<b>Total</b>	<b>50</b>	<b>120</b>	<b>145</b>	<b>170</b>	<b>195</b>	<b>220</b>	<b>245</b>	<b>270</b>	<b>295</b>	<b>320</b>

4	School of Continuing Education	PHASE 1					PHASE 2				
Sr. No.	Name of Programmes	2024-25	2025-26	2026-27	2027-28	2028-29	2029-30	2030-31	2031-32	2032-33	2033-34
		A.Y.1	A.Y.2	A.Y.3	A.Y.4	A.Y.5	A.Y.6	A.Y.7	A.Y.8	A.Y.9	A.Y.10
1	Certificate in Extrusion	-	-	15	15	30	30	30	30	45	45
2	Certificate in Injection Moulding	-	-	-	15	15	30	30	30	30	45
3	Certificate in Material Characterization	-	-	15	15	30	30	30	30	30	45
4	Certificate in 3D Printing/ Prototyping	10	15	15	30	30	30	30	30	45	45
5	Certificate in Product Design	-	-	-	15	15	30	30	30	30	30
6	Certificate in Compounding and Polymer Processing	-	-	15	15	30	30	30	30	45	45
	<b>Total</b>	<b>10</b>	<b>15</b>	<b>60</b>	<b>105</b>	<b>150</b>	<b>180</b>	<b>180</b>	<b>180</b>	<b>225</b>	<b>255</b>
	<b>Grand Total</b>	<b>120</b>	<b>255</b>	<b>505</b>	<b>857</b>	<b>1,304</b>	<b>1,644</b>	<b>1,978</b>	<b>2,288</b>	<b>2,654</b>	<b>2,914</b>

### 13.1.2 Human Resource

The projection of Human Resource required at the campus over the period of 10 years is mentioned below.

HUMAN RESOURCE- TEACHING STAFF											
Sr. No.	Positions	PHASE 1					PHASE 2				
		2024-25	2025-26	2026-27	2027-28	2028-29	2029-30	2030-31	2031-32	2032-33	2033-34
		A.Y.1	A.Y.2	A.Y.3	A.Y.4	A.Y.5	A.Y.6	A.Y.7	A.Y.8	A.Y.9	A.Y.10
1	Principal/ Dean	1	-	-	1	-	1	-	-	-	-
2	Professors	-	1	1	3	6	7	9	12	14	15
3	Associate Professors	1	1	2	6	10	14	17	21	24	26
4	Assistant Professors	2	4	7	15	27	36	46	54	63	69
5	HOD	-	-	1	1	1	1	1	1	1	1
6	Lecturer / Visiting Faculty	1	4	8	12	17	17	19	19	22	23
7	Professor of Practice	1	1	1	2	2	2	2	2	2	2
	<b>Grand Total</b>	<b>6</b>	<b>11</b>	<b>20</b>	<b>40</b>	<b>63</b>	<b>78</b>	<b>94</b>	<b>109</b>	<b>126</b>	<b>136</b>

HUMAN RESOURCE- NON-TEACHING STAFF											
Sr. No.	Positions	PHASE 1					PHASE 2				
		2024-25	2025-26	2026-27	2027-28	2028-29	2029-30	2030-31	2031-32	2032-33	2033-34
		A.Y.1	A.Y.2	A.Y.3	A.Y.4	A.Y.5	A.Y.6	A.Y.7	A.Y.8	A.Y.9	A.Y.10
1	Director/Provost	1	1	1	1	1	1	1	1	1	1
2	Chief Administrative Officer cum Registrar	1	1	1	1	1	1	1	1	1	1
3	Chief Finance & Accounts Officer	0	0	1	1	1	1	1	1	1	1
4	Controller of Examination	0	1	1	1	1	1	1	1	1	1
5	Finance and Accounts Officer	0	1	1	1	1	1	1	1	1	1
6	Librarian	0	0	1	1	1	1	1	1	1	1
7	Deputy Librarian	0	0	0	0	0	0	0	0	0	0
8	Asst. Librarian (Selection Grade)	1	0	0	1	1	1	1	1	1	1
9	Admin Officer	0	1	1	1	1	1	1	1	1	1
10	Assistant Admin Officer	0	1	1	1	1	1	1	1	1	1
11	Reception Staff	1	1	1	2	2	2	2	2	2	2
12	HR Executive	0	1	1	1	1	2	2	2	2	2
13	Admin Executive	0	1	1	1	1	1	1	1	1	1

HUMAN RESOURCE- NON-TEACHING STAFF											
Sr. No.	Positions	PHASE 1					PHASE 2				
		2024-25	2025-26	2026-27	2027-28	2028-29	2029-30	2030-31	2031-32	2032-33	2033-34
		A.Y.1	A.Y.2	A.Y.3	A.Y.4	A.Y.5	A.Y.6	A.Y.7	A.Y.8	A.Y.9	A.Y.10
14	Store in Charge	0	1	1	1	1	1	1	1	1	1
15	Executive Assistant	1	2	2	2	2	2	2	2	2	2
16	Finance, Accounts and Audit Executive	1	1	1	1	1	1	1	1	1	1
17	Laboratory in Charge	1	2	2	3	3	3	3	4	4	5
18	Workshop staff (Technical)	1	2	2	2	2	2	2	2	2	2
19	Manager Multi Media Centre	0	0	1	1	1	1	1	1	1	1
20	System Administrator	1	1	1	1	1	1	1	1	1	1
21	IT Executive	0	0	1	1	1	1	1	1	1	1
22	Programmer	0	0	1	1	1	1	1	1	1	1
23	Security Staff	6	10	12	18	20	20	20	20	20	20
24	Sr. Manager - PR & Intl. Relations	0	1	1	1	1	1	1	1	1	1
25	Manager - Marketing and Outreach	1	1	1	1	1	1	1	1	1	1
26	Executive - Marketing and Outreach	1	1	2	2	2	2	2	2	2	2
27	Counsellor	1	2	2	2	3	3	3	3	3	3
28	Telecallers	1	2	2	2	2	2	2	2	2	2
29	Academic Administrative Officer	1	1	1	1	1	1	1	1	1	1
30	Placement Officer / Assistant TPO	1	1	1	1	1	1	1	1	1	1
31	Sports Officer / Either PEO or Sports Officer	1	1	1	1	1	1	1	1	1	1
32	Project I/C	1	1	1	1	1	1	1	1	1	1
33	Project Engineer	1	1	1	1	1	1	1	1	1	1
34	Liasioning Officer	1	1	1	1	1	1	1	1	1	1
	<b>Total</b>	<b>22</b>	<b>38</b>	<b>46</b>	<b>55</b>	<b>58</b>	<b>59</b>	<b>59</b>	<b>60</b>	<b>60</b>	<b>61</b>
	<b>Staff who require computer</b>	<b>17</b>	<b>34</b>	<b>43</b>	<b>53</b>	<b>56</b>	<b>59</b>	<b>59</b>	<b>60</b>	<b>60</b>	<b>61</b>
	<b>Number of Non - Teaching Staff required</b>	<b>7</b>	<b>12</b>	<b>22</b>	<b>44</b>	<b>69</b>	<b>86</b>	<b>103</b>	<b>120</b>	<b>139</b>	<b>150</b>
	<b>Non Teaching : Teaching Staff</b>	<b>3.14</b>	<b>3.17</b>	<b>2.09</b>	<b>1.25</b>	<b>0.84</b>	<b>0.69</b>	<b>0.57</b>	<b>0.5</b>	<b>0.43</b>	<b>0.41</b>

### 13.1.3 Capital Expenditure

The capital expenditure at PIU includes significant costs for building construction, laboratory and IT equipment, library resources, and contingency expenses. These investments are crucial for establishing state-of-the-art facilities and ensuring a robust academic and research environment. The details of the same are mentioned below.

Capital Expenditure Requirement											
Annual Cost in Crore			PHASE 1					PHASE 2			
Sr. No.	Particulars	2024-25	2025-26	2026-27	2027-28	2028-29	2029-30	2030-31	2031-32	2032-33	2033-34
		A.Y.1	A.Y.2	A.Y.3	A.Y.4	A.Y.5	A.Y.6	A.Y.7	A.Y.8	A.Y.9	A.Y.10
1	Building	15.33	28.81	38.83	55.69	14.86	5.1	5.47	3.07	0	0
2	Lab Equipment	0	0	1.26	2.52	1.89	1.26	1.89	0.63	0	0
3	IT Equipment	0.13	0.18	0.27	0.39	0.42	0.33	0.36	0.35	0.36	0.28
4	Library Expenses	0	0.17	0.17	0.14	0.14	0	0	0	0	0
5	Preliminary Expenses	0.5	0.5	0	0	0	0	0	0	0	0
6	Pre-operative Expenses	0.5	0.5	0	0	0	0	0	0	0	0
	<b>Total</b>	<b>16.46</b>	<b>30.17</b>	<b>40.52</b>	<b>58.74</b>	<b>17.3</b>	<b>6.69</b>	<b>7.72</b>	<b>4.05</b>	<b>0.36</b>	<b>0.28</b>
	<b>Contingency @10%</b>	<b>1.65</b>	<b>3.02</b>	<b>4.05</b>	<b>5.87</b>	<b>1.73</b>	<b>0.67</b>	<b>0.77</b>	<b>0.4</b>	<b>0.04</b>	<b>0.03</b>
	<b>Grand Total</b>	<b>18.11</b>	<b>33.18</b>	<b>44.58</b>	<b>64.62</b>	<b>19.03</b>	<b>7.36</b>	<b>8.49</b>	<b>4.45</b>	<b>0.4</b>	<b>0.31</b>

Building Infrastructure												
Annual Cost in Crore 1,00,00,000			PHASE 1					PHASE 2				
Sr. No.	Particulars	Per Unit Cost sq mt. (in Lakhs)	2024-25	2025-26	2026-27	2027-28	2028-29	2029-30	2030-31	2031-32	2032-33	2033-34
			A.Y.1	A.Y.2	A.Y.3	A.Y.4	A.Y.5	A.Y.6	A.Y.7	A.Y.8	A.Y.9	A.Y.10
A1	School of Polymer Science and Plastics Technology	0.42	0	2.67	2.69	5.96	2.47	3.51	3.91	1.65	0	0
A2	School of Entrepreneurship and Innovation	0.42	0	0	3.39	0.61	0.61	0	0	0.61	0	0
A3	Centre of Excellence in Sustainability	0.42	0	0	0.41	0.41	0	0	0	0	0	0
A4	School of Continuing Education	0.42	0	0	0	0	0	0	0	0	0	0
B	Administrative Area	0.42	0	0.31	2.93	2.59	0.24	0.24	0.12	0	0	0
C	Amenities Area	0.42	10.08	18.25	19.01	31.46	7.62	0	0	0	0	0
D	IT Infrastructure Area	0.42	0.19	0	0.18	0	0	0	0	0	0	0
E	Circulation Area @ 30%	0.15	3.67	7.58	10.22	14.65	3.91	1.34	1.44	0.81	0	0
	<b>Total</b>		<b>13.94</b>	<b>28.81</b>	<b>38.83</b>	<b>55.69</b>	<b>14.86</b>	<b>5.1</b>	<b>5.47</b>	<b>3.07</b>	<b>0</b>	<b>0</b>
	<b>Design &amp; Project Management Cost</b>		<b>1.39</b>	<b>0</b>	<b>0</b>	<b>0</b>	<b>0</b>	<b>0</b>	<b>0</b>	<b>0</b>	<b>0</b>	<b>0</b>
	<b>Grand Total</b>		<b>15.33</b>	<b>28.81</b>	<b>38.83</b>	<b>55.69</b>	<b>14.86</b>	<b>5.1</b>	<b>5.47</b>	<b>3.07</b>	<b>0</b>	<b>0</b>

IT Requirements											
Annual Cost in Crore		PHASE 1					PHASE 2				
Sr. No.	Type of Facilities	2024-25	2025-26	2026-27	2027-28	2028-29	2029-30	2030-31	2031-32	2032-33	2033-34
		A.Y.1	A.Y.2	A.Y.3	A.Y.4	A.Y.5	A.Y.6	A.Y.7	A.Y.8	A.Y.9	A.Y.10
1	<b>Computers/ Laptops</b>	0.09	0.14	0.22	0.35	0.41	0.33	0.35	0.35	0.35	0.28
2	<b>Internet (300 MBPS)</b>	0.04	0.04	0.04	0.04	-	-	-	-	-	-
3	<b>Printers</b>	0	0	0.01	0.01	0.01	0	0.01	0	0.01	0
	<b>Grand Total</b>	<b>0.13</b>	<b>0.18</b>	<b>0.27</b>	<b>0.39</b>	<b>0.42</b>	<b>0.33</b>	<b>0.36</b>	<b>0.35</b>	<b>0.36</b>	<b>0.28</b>

Library Requirements											
Annual Cost in Crore		PHASE 1					PHASE 2				
Sr. No.	Type of Facilities	2024-25	2025-26	2026-27	2027-28	2028-29	2029-30	2030-31	2031-32	2032-33	2033-34
		A.Y.1	A.Y.2	A.Y.3	A.Y.4	A.Y.5	A.Y.6	A.Y.7	A.Y.8	A.Y.9	A.Y.10
1	Books	0	0.14	0.14	0.14	0.14	-	-	-	-	-
2	Journals	0	0.02	0.02	0	0	0	0	0	0	0
3	E- Journals	0	0.01	0.01	0	0	0	0	0	0	0
	<b>Grand Total</b>	<b>0</b>	<b>0.17</b>	<b>0.17</b>	<b>0.14</b>	<b>0.14</b>	<b>0</b>	<b>0</b>	<b>0</b>	<b>0</b>	<b>0</b>

### 13.1.4 Income Statement Projections

The income statement projections after analysing the revenue, operating expenses and depreciation are showcased below for the next 10 years at PIU.

Amount in Crore	PHASE 1					PHASE 2				
Particulars	2024-25	2025-26	2026-27	2027-28	2028-29	2029-30	2030-31	2031-32	2032-33	2033-34
	A.Y.1	A.Y.2	A.Y.3	A.Y.4	A.Y.5	A.Y.6	A.Y.7	A.Y.8	A.Y.9	A.Y.10
<b>Revenue</b>										
Fees from Students	0.53	1.18	2.99	6.91	13.75	21.24	30.08	38.18	49.84	60.36
<b>Total (A)</b>	<b>0.53</b>	<b>1.18</b>	<b>2.99</b>	<b>6.91</b>	<b>13.75</b>	<b>21.24</b>	<b>30.08</b>	<b>38.18</b>	<b>49.84</b>	<b>60.36</b>
<b>Operating Expenses</b>										
<b>Salary</b>										
Salary - Teaching Staff	0.72	1.04	1.99	4.37	6.78	8.72	10.35	12.29	14.21	15.34
Salary - Non-Teaching Staff	1.77	2.64	3.31	3.64	3.74	3.79	3.79	3.82	3.82	3.85
<b>Total (B1)</b>	<b>2.49</b>	<b>3.68</b>	<b>5.3</b>	<b>8.01</b>	<b>10.52</b>	<b>12.52</b>	<b>14.14</b>	<b>16.11</b>	<b>18.03</b>	<b>19.19</b>
Other Operating Expenses - Regular	0.83	1.23	1.77	2.67	3.51	4.17	4.71	5.37	6.01	6.4
Operating Expenses - Strategic initiatives	0.91	1.66	2.23	3.23	0.95	0.37	0.42	0.22	0.02	0.02
<b>Total (B2)</b>	<b>1.73</b>	<b>2.88</b>	<b>4</b>	<b>5.9</b>	<b>4.46</b>	<b>4.54</b>	<b>5.14</b>	<b>5.59</b>	<b>6.03</b>	<b>6.41</b>
Total Operating Expenses (B)	4.22	6.56	9.3	13.91	14.98	17.05	19.28	21.71	24.06	25.6
<b>Operating Surplus (Deficit) (A-B)</b>	<b>-3.69</b>	<b>-5.38</b>	<b>-6.31</b>	<b>-7</b>	<b>-1.23</b>	<b>4.18</b>	<b>10.8</b>	<b>16.47</b>	<b>25.78</b>	<b>34.76</b>
Gross Operating Margin	-6.97	-4.56	-2.11	-1.01	-0.09	0.2	0.36	0.43	0.52	0.58
Depreciation										
Preliminary Expenses (Writing Off)	0.05	0.1	0.1	0.1	0.1	0.1	0.1	0.1	0.1	0.1
Pre-operative Expenses (Writing Off)	0.05	0.1	0.1	0.1	0.1	0.1	0.1	0.1	0.1	0.1
Depreciation of capex	1.53	4.38	8.13	13.38	13.89	13.18	12.68	29.13	26.14	23.45
Total C	1.63	4.58	8.33	13.58	14.09	13.38	12.88	29.33	26.34	23.65
<b>EBIT - Surplus/ (Deficit) (A-B-C)</b>	<b>-5.33</b>	<b>-9.96</b>	<b>-14.64</b>	<b>-20.58</b>	<b>-15.32</b>	<b>-9.2</b>	<b>-2.09</b>	<b>-12.86</b>	<b>-0.56</b>	<b>11.11</b>
EBIT Margin	-10.05	-8.44	-4.9	-2.98	-1.11	-0.43	-0.07	-0.34	-0.01	0.18

### 13.1.5 Projected Revenue

The projected revenue of PIU for the next 10 years is showcased below.

School-wise Projected Revenue											
Sr. No.	Amount in Crore	PHASE 1					PHASE 2				
	School	2024-25	2025-26	2026-27	2027-28	2028-29	2029-30	2030-31	2031-32	2032-33	2033-34
		A.Y.1	A.Y.2	A.Y.3	A.Y.4	A.Y.5	A.Y.6	A.Y.7	A.Y.8	A.Y.9	A.Y.10
1	School of Polymer Science and Plastics Technology	0.48	1.06	2.65	4.69	7.46	10.14	13.46	17.44	21.35	25.75
2	School of Entrepreneurship and Innovation	-	-	-	1.64	5.4	9.94	15.33	19.31	26.56	32.22
3	Centre of Excellence in Sustainability	0.02	0.07	0.08	0.1	0.12	0.14	0.17	0.2	0.24	0.28
4	School of Continuing Education	0.04	0.06	0.25	0.49	0.77	1.01	1.12	1.23	1.69	2.1
	<b>Total</b>	<b>0.53</b>	<b>1.18</b>	<b>2.99</b>	<b>6.91</b>	<b>13.75</b>	<b>21.24</b>	<b>30.08</b>	<b>38.18</b>	<b>49.84</b>	<b>60.36</b>

Program Wise Projected Revenue											
Sr. No.	Name of Programmes	PHASE 1					PHASE 2				
		2024-25	2025-26	2026-27	2027-28	2028-29	2029-30	2030-31	2031-32	2032-33	2033-34
		A.Y.1	A.Y.2	A.Y.3	A.Y.4	A.Y.5	A.Y.6	A.Y.7	A.Y.8	A.Y.9	A.Y.10
1	Diploma in Plastic Engineering	0	0	0.33	0.72	1.19	1.3	1.43	1.58	1.74	1.91
2	B. Tech in Plastic and Polymer Engineering	0.48	1.06	1.74	2.56	3.16	3.87	5.1	6.55	7.72	9.05
3	B. Tech in Chemical Engineering	0	0	0.58	1.28	2.11	3.09	3.83	4.68	6.17	7.92
4	B. Tech in Mechanical Engineering	0	0	0	0	0.7	1.55	2.55	3.74	4.63	5.66
5	M. Tech in Plastic and Polymer Engineering	0	0	0	0.14	0.3	0.33	0.36	0.5	0.66	0.72
6	M. Tech in Chemical Engineering	0	0	0	0	0	0	0.18	0.4	0.44	0.48
7	M. Tech in Mechanical Engineering	0	0	0	0	0	0	0.18	0.4	0.44	0.48
8	M. Sc in Polymer Sciences	0	0	0	0.26	0.57	0.63	0.69	1.14	1.67	1.84
9	PhD	0	0	0	0	0.03	0.11	0.2	0.31	0.48	0.69
	<b>Total</b>	<b>0.48</b>	<b>1.06</b>	<b>2.65</b>	<b>4.69</b>	<b>7.46</b>	<b>10.14</b>	<b>13.46</b>	<b>17.44</b>	<b>21.35</b>	<b>25.75</b>

2		PHASE 1					PHASE 2				
Sr. No.	Name of Programmes	2024-25	2025-26	2026-27	2027-28	2028-29	2029-30	2030-31	2031-32	2032-33	2033-34
		A.Y.1	A.Y.2	A.Y.3	A.Y.4	A.Y.5	A.Y.6	A.Y.7	A.Y.8	A.Y.9	A.Y.10
1	MBA in Entrepreneurship/HR/ Finance/ Marketing/ International Business/ Technology Operations & MIS	0	0	0	1.64	3.6	5.94	8.72	9.59	10.55	11.6
2	Integrated MBA	0	0	0	0	1.8	3.96	6.54	9.59	15.82	20.3
4	PhD in Management	0	0	0	0	0	0.04	0.08	0.13	0.19	0.32
	<b>Total</b>	-	-	-	<b>1.64</b>	<b>5.4</b>	<b>9.94</b>	<b>15.33</b>	<b>19.31</b>	<b>26.56</b>	<b>32.22</b>

3		PHASE 1					PHASE 2				
Sr. No.	Name of Programmes	2024-25	2025-26	2026-27	2027-28	2028-29	2029-30	2030-31	2031-32	2032-33	2033-34
		A.Y.1	A.Y.2	A.Y.3	A.Y.4	A.Y.5	A.Y.6	A.Y.7	A.Y.8	A.Y.9	A.Y.10
1	Short Term Courses	0	0.03	0.04	0.04	0.04	0.05	0.05	0.06	0.06	0.07
2	Seminars/ Webinars/ Workshops	0.02	0.03	0.05	0.06	0.08	0.1	0.12	0.15	0.18	0.21
	<b>Total</b>	<b>0.02</b>	<b>0.07</b>	<b>0.08</b>	<b>0.1</b>	<b>0.12</b>	<b>0.14</b>	<b>0.17</b>	<b>0.2</b>	<b>0.24</b>	<b>0.28</b>

4		PHASE 1					PHASE 2				
Sr. No.	Name of Programmes	2024-25	2025-26	2026-27	2027-28	2028-29	2029-30	2030-31	2031-32	2032-33	2033-34
		A.Y.1	A.Y.2	A.Y.3	A.Y.4	A.Y.5	A.Y.6	A.Y.7	A.Y.8	A.Y.9	A.Y.10
1	Certificate in Extrusion	0	0	0.06	0.07	0.15	0.17	0.19	0.2	0.34	0.37
2	Certificate in Injection Moulding	0	0	0	0.07	0.08	0.17	0.19	0.2	0.23	0.37
3	Certificate in Material Characterization	0	0	0.06	0.07	0.15	0.17	0.19	0.2	0.23	0.37
4	Certificate in 3D Printing/ Prototyping	0.04	0.06	0.06	0.14	0.15	0.17	0.19	0.2	0.34	0.37
5	Certificate in Product Design	0	0	0	0.07	0.08	0.17	0.19	0.2	0.23	0.25
6	Certificate in Compounding and Polymer Processing	0	0	0.06	0.07	0.15	0.17	0.19	0.2	0.34	0.37
	<b>Total</b>	<b>0.04</b>	<b>0.06</b>	<b>0.25</b>	<b>0.49</b>	<b>0.77</b>	<b>1.01</b>	<b>1.12</b>	<b>1.23</b>	<b>1.69</b>	<b>2.1</b>

### 13.1.6 Cashflow Statement

The cashflow statement projection for the PIU over the period of next 10 years is presented below.

Amount in Crore	PHASE 1					PHASE 2				
Particulars	2024-25	2025-26	2026-27	2027-28	2028-29	2029-30	2030-31	2031-32	2032-33	2033-34
	A.Y.1	A.Y.2	A.Y.3	A.Y.4	A.Y.5	A.Y.6	A.Y.7	A.Y.8	A.Y.9	A.Y.10
<b>Opening Cash &amp; Bank</b>	0	-18.97	-52.94	-97.12	-158.24	-167.09	-156.47	-137.35	-105.66	-57.07
<b>Application of funds</b>										
Capital Expenditure	18.11	33.18	44.58	64.62	19.03	7.36	8.49	4.45	0.4	0.31
Operating Deficit (Surplus)#	0.86	0.79	-0.40	-3.49	-10.19	-17.98	-27.61	-36.15	-48.99	-60.92
End Fund	0	0	0	0	0	-	0	0	0	0
<b>Total Cash Payments</b>	18.97	33.97	44.18	61.13	8.85	-10.62	-19.12	-31.69	-48.59	-60.61
<b>Sources of funds</b>										
Promoters' Contribution	0	0	0	0	0	0	0	0	0	0
Other Source of Funds	0	0	0	0	0	0	0	0	0	0
<b>Total Cash Collections</b>	0	0	0	0	0	0	0	0	0	0
<b>Closing Balance</b>	-18.97	-52.94	-97.12	-158.24	-167.09	-156.47	-137.35	-105.66	-57.07	3.54

***\*This is subject to discussion and approval by the PIU Board of Management***

## 13.2 Financial Sustainability

Ensuring the financial sustainability of PIU requires a comprehensive approach that balances revenue generation, cost management, and strategic investments. The PIU's financial health depends on expanding income streams, optimizing resource allocation, and fostering strategic partnerships. By focusing on these key areas, PIU can build a resilient financial foundation that supports long-term growth and academic excellence.

PIU shall explore multiple income sources beyond tuition fees. These include securing research grants from industry and government bodies, fostering collaborations with corporations in the plastics and materials sectors, and developing executive education programs tailored to industry needs. Additionally, PIU will leverage its expertise by offering consultancy services and creating industry-specific certifications that enhance its reputation and generate additional revenue.

PIU will implement robust financial planning and control mechanisms to manage operating expenses effectively. This includes adopting cost-saving technologies, optimizing administrative processes, and reviewing expenditure regularly to identify and eliminate inefficiencies. Strategic investments in energy-efficient infrastructure and sustainable practices can reduce long-term operational costs and contribute to environmental managing, aligning with PIU's mission of promoting innovation in the plastics industry.

Strategic Partnerships and Endowments will further bolster financial sustainability. By forging alliances with industry leaders, PIU will also secure funding for scholarships, research initiatives, and facility upgrades. Establishing a strong endowment fund to provide a steady income stream, supporting various academic and research programs. Engaging alumni and corporate partners through targeted fundraising campaigns and networking events can also enhance financial resources and institutional support.

By implementing these strategies, PIU plans to ensure a stable and prosperous future, advancing its mission of excellence in education and research within the plastics sector.



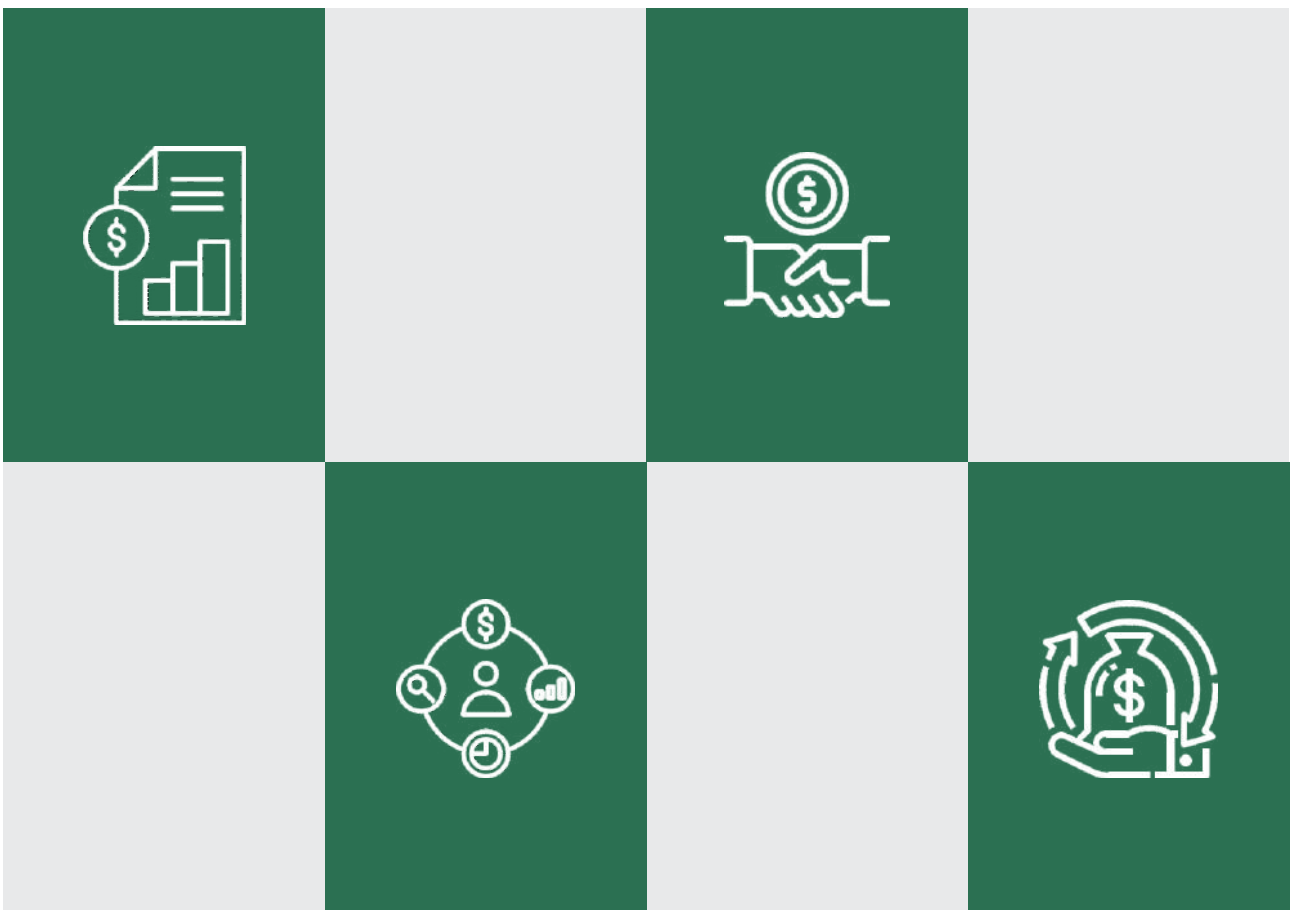
### 13.3 Investment Strategy

Effective investment strategies are critical to building a solid foundation for academic excellence and long-term success. Key components of this strategy include capital investments in infrastructure, strategic partnerships, and future-oriented educational initiatives.

Capital Investments in Infrastructure form the backbone of investment strategy. PIU's Funding will focus on developing state-of-the-art facilities, such as modern classrooms, research labs, libraries, and student housing. High-quality infrastructure not only attracts students and faculty but also enhances the overall educational experience. Prioritizing sustainable and energy-efficient designs can reduce long-term operational costs and align with contemporary educational values. Investment in technology, such as advanced learning management systems and digital resources, is also crucial for delivering innovative and flexible education.

Future-Oriented Educational Initiatives are essential for long-term growth and sustainability. A promising strategy involves planning for future educational expansion, such as the development of high schools that can serve as a feeder system for the university. By establishing high schools with a strong focus on STEM (Science, Technology, Engineering, and Mathematics) education, the university can nurture a pipeline of students who are well-prepared for higher education. These high schools can offer specialized programs aligned with the university's curriculum, ensuring a seamless transition for students into undergraduate programs. This approach not only secures a steady stream of future students but also strengthens the university's brand and educational influence from an early stage.

Furthermore, engaging with local and regional communities can strengthen PIU's presence and foster support from stakeholders who are invested in its success. This Investment strategies will emphasize capital investments in high-quality infrastructure, foster strategic partnerships, include future-oriented initiatives such and can build a solid foundation, enhance its educational offerings, and ensure a steady flow of students and revenue for sustained growth and success



### 13.4 Revenue Generation Strategies

PIU has made provisions for revenue generation, incorporating diverse strategies to secure its financial stability and support its mission of advancing education and research in the plastics sector. This strategy encompasses diverse income streams, each contributing significantly to the PIU's financial health and operational effectiveness. The primary components of these strategies include revenue from student fees, research and consultancy services, and endowment funds with interest incomes.

Revenue from Students constitutes a significant portion of PIU's financial resources. By setting tuition fees and offering a range of specialized programs in the plastics industry, PIU attracts a diverse student body. To enhance this revenue stream, PIU regularly reviews and adjusts its fee structure in alignment with market trends and the cost of delivering high-quality education. Additionally, PIU invests in scholarship programs to attract top talent and maintain enrolment levels, ensuring a steady influx of revenue while fostering academic excellence.

To establish itself as a leader in the plastics field, making it a sought-after partner for industry and government-funded research initiatives. By leveraging its faculty's expertise and state-of-the-art facilities, PIU engages in collaborative research projects that generate significant funding. Consultancy services provided to companies in the plastics industry further contribute to its revenue. These services not only support financial sustainability but also enhance PIU's reputation as a key player in advancing technological innovations and industry standards.

Endowment Funds from Gujarat State Financial Services (GSFS) Ltd provides a vital source for securing operational funding. GSFS Ltd enables PIU to secure substantial endowment contributions, which are crucial for long-term financial stability. These funds support various initiatives, including infrastructure development, faculty research, and student scholarships. By maintaining and growing the endowment fund, PIU ensures a reliable financial base that can support ongoing and future projects. GSFS Ltd also reflects the interest on incomes on regional financial institutions, reinforcing its position within the local and national educational landscape.

The revenue generation strategies employed by PIU are integral to its financial sustainability. These strategies not only provide essential operational funding but also enables PIU to achieve its educational and research objectives, securing its place as a leading institution in the plastics sector.

CHAPTER

14

**Building Our Future:  
Infrastructure and Facilities**

## Building Our Future: Infrastructure and Facilities

Plastindia International University is committed to providing state-of-the-art infrastructure and facilities that foster an environment encouraging to learning, research, and innovation. PIU campus is furnished with modern amenities and advanced technologies designed to support the academic and extracurricular needs of students, faculty, and researchers. From setting-up of cutting-edge laboratories and research centres to comfortable residential accommodations and recreational areas, PIU's plan for infrastructure is meticulously prepared to ensure a holistic and inspiring educational experience. The university's pledge to invest in world-class facilities to underscore its dedication to excellence and fulfilment of its mission to develop skilled professionals and leaders in the plastics and polymer sciences industry.



## 14.1 Academic and Research Facility

The infrastructure development at Plastindia International University (PIU) is planned in two phases, each spanning five years. PIU comprises four major schools: the School of Polymer Science and Plastics Technology, the School of Entrepreneurship and Innovation, the Centre of Excellence in Sustainability, and the School of Continuing Education. Each school will have dedicated instructional and administrative areas. A detailed breakdown of the area requirements for each school is provided below.

**Table 1: School wise Carpet Area requirements**

Sr. No	Phase	PHASE 1					PHASE 2				
		2024-25	2025-26	2026-27	2027-28	2028-29	2029-30	2030-31	2031-32	2032-33	2033-34
		A.Y.1	A.Y.2	A.Y.3	A.Y.4	A.Y.5	A.Y.6	A.Y.7	A.Y.8	A.Y.9	A.Y.10
<b>A</b>	Instructional Area										
<b>A1</b>	School of Polymer Science and Plastics Technology	1,412	454	457	1,014	420	597	665	281	-	-
<b>A2</b>	School of Entrepreneurship and Innovation	-	-	577	104	104	-	-	104	-	-
<b>A3</b>	Centre of Excellence in Sustainability	-	-	70	70	-	-	-	-	-	-
<b>A4</b>	School of Continuing Education	-	-	-	-	-	-	-	-	-	-
<b>B</b>	Administrative Area	449	53	499	440	41	41	21	-	-	-
<b>C</b>	Amenities Area	1,715	3,104	3,233	5,350	1,296	-	-	-	-	-
<b>D</b>	IT Infrastructure Area	32	-	30	-	-	-	-	-	-	-
<b>Total Carpet/Built Up Area (Sq. Mt.)</b>		3,608	3,611	4,865	6,979	1,862	639	686	385	-	-
<b>Circulation Area @ 25%</b>		1,082.25	1083.16	1,459.64	2,093.55	558.49	191.64	205.67	115.48	-	-
<b>Grand Total</b>		4,689.75	4,693.68	6,325.12	9,072.06	2,420.13	830.44	891.25	500.40	-	-

**Table 2: Area Requirement for School of Polymer Science and Plastics Technology**

Sr. No	Type of Infrastructure	Required Carpet Area (in Sq Mt.)	Capacity (in terms of Students / Unit)	PHASE 1					PHASE 2				
				2024-25	2025-26	2026-27	2027-28	2028-29	2029-30	2030-31	2031-32	2032-33	2033-34
A	Instructional Area			A.Y.1	A.Y.2	A.Y.3	A.Y.4	A.Y.5	A.Y.6	A.Y.7	A.Y.8	A.Y.9	A.Y.10
<b>A1</b>	<b>School of Polymer Science and Plastics Technology</b>												
1	Class Rooms	104.32	60	0	4	1	4	0	2	2	1	0	0
2	Tutorial Rooms	36.28	30	0	1	2	1	0	3	1	1	0	0
3	Laboratory	70	30	0	0	4	8	6	4	6	2	0	0
4	Workshop	200.4	-	0	0	0	0	0	0	0	0	0	0
5	Language Laboratory	51.73	30	0	0	0	0	0	0	0	0	0	0
6	Computer Centre	150.37	30	0	0	0	0	0	0	0	0	0	0
7	Additional Laboratory/ Workshop	202.47	0	0	0	0	0	0	0	0	0	0	0
8	Drawing Hall	135.55	30	0	0	0	0	0	0	0	0	0	0
9	Seminar Hall	133.85	60	0	0	0	0	0	0	0	0	0	0
10	Library & Reading Room	433.39		0	0	0	0	0	0	0	0	0	0
	<b>Total Carpet Area</b>			<b>0</b>	<b>453.56</b>	<b>456.88</b>	<b>1013.56</b>	<b>420</b>	<b>597.48</b>	<b>664.92</b>	<b>280.6</b>	<b>0</b>	<b>0</b>

**Table 3: Area Requirement for School of Entrepreneurship and Innovation**

Sr. No.	Type of Infrastructure	Required Carpet Area (in Sq. Mt.)	Capacity (in terms of Students/ Unit)	PHASE 1					PHASE 2				
				2024-25	2025-26	2026-27	2027-28	2028-29	2029-30	2030-31	2031-32	2032-33	2033-34
A	Instructional Area			A.Y.1	A.Y.2	A.Y.3	A.Y.4	A.Y.5	A.Y.6	A.Y.7	A.Y.8	A.Y.9	A.Y.10
<b>A2</b>	<b>School of Entrepreneurship and Innovation</b>												
1	Class Rooms	104.32	60	0	0	1	1	1	0	0	1	0	0
2	Tutorial Rooms	36.28	30	0	0	1	0	0	0	0	0	0	0
3	Computer Centre	150.37	30	0	0	1	0	0	0	0	0	0	0
4	Laboratory	51.73	30	0	0	1	0	0	0	0	0	0	0
5	Seminar Hall	133.85		0	0	1	0	0	0	0	0	0	0
6	Library & Reading Room	100	-	0	0	1	0	0	0	0	0	0	0
	<b>Total Carpet Area</b>			<b>0</b>	<b>0</b>	<b>576.55</b>	<b>104.32</b>	<b>104.32</b>	<b>0</b>	<b>0</b>	<b>104.32</b>	<b>0</b>	<b>0</b>

**Table 4: Area Requirement for Centre of Excellence in Sustainability**

Sr. No.	Type of Infrastructure	Required Carpet Area (in Sq Mt.)	Capacity (in terms of Students / Unit)	PHASE 1					PHASE 2				
				2024-25	2025-26	2026-27	2027-28	2028-29	2029-30	2030-31	2031-32	2032-33	2033-34
A	Instructional Area			A.Y.1	A.Y.2	A.Y.3	A.Y.4	A.Y.5	A.Y.6	A.Y.7	A.Y.8	A.Y.9	A.Y.10
A3	Centre of Excellence in Sustainability												
1	Class Rooms	104.32	60	0	0	0	0	0	0	0	0	0	0
2	Laboratory	70	30	0	0	1	1	0	0	0	0	0	0
3	Seminar Hall	133.85	132	0	0	0	0	0	0	0	0	0	0
	<b>Total Carpet Area</b>			<b>0</b>	<b>0</b>	<b>70</b>	<b>70</b>	<b>0</b>	<b>0</b>	<b>0</b>	<b>0</b>	<b>0</b>	<b>0</b>

**Table 4: Area Requirement for Centre of Excellence in Sustainability**

Sr. No.	Type of Infrastructure	Required Carpet Area (in Sq Mt.)	Capacity (in terms of Students / Unit)	PHASE 1					PHASE 2				
				2024-25	2025-26	2026-27	2027-28	2028-29	2029-30	2030-31	2031-32	2032-33	2033-34
A	Instructional Area			A.Y.1	A.Y.2	A.Y.3	A.Y.4	A.Y.5	A.Y.6	A.Y.7	A.Y.8	A.Y.9	A.Y.10
A4	School of Continuing Education												
1	Class Rooms	104.32	60	0	0	0	0	0	0	0	0	0	0
2	Tutorial Rooms	36.28	30	0	0	0	0	0	0	0	0	0	0
	<b>Total Carpet Area</b>			<b>0</b>	<b>0</b>	<b>0</b>	<b>0</b>	<b>0</b>	<b>0</b>	<b>0</b>	<b>0</b>	<b>0</b>	<b>0</b>

**Table 6: Area Requirement for Administrative Facility**

Sr. No.	Type of Infrastructure	Required Carpet Area (in Sq Mt.)	Capacity (in terms of Students / Unit)	PHASE 1					PHASE 2				
				2024-25	2025-26	2026-27	2027-28	2028-29	2029-30	2030-31	2031-32	2032-33	2033-34
B	Administrative Area												
1	Principal / Director Room	34.37	10	-	-	1	1	-	-	-	-	-	-
2	Board Room	36.27	15	-	-	1	1	-	-	-	-	-	-
3	Cabins for HoDs	21.88	4	-	1	1	-	-	-	-	-	-	-
4	Office All Inclusive	87.75	-	-	-	1	1	-	-	-	-	-	-
5	Faculty Cabin	10.33	2	-	2	6	8	4	4	2	-	-	-
6	Central Stores	36.76	-	-	-	1	1	-	-	-	-	-	-

Sr. No.	Type of Infrastructure	Required Carpet Area (in Sq Mt.)	Capacity (in terms of Students / Unit)	PHASE 1					PHASE 2				
				2024-25	2025-26	2026-27	2027-28	2028-29	2029-30	2030-31	2031-32	2032-33	2033-34
				A.Y.1	A.Y.2	A.Y.3	A.Y.4	A.Y.5	A.Y.6	A.Y.7	A.Y.8	A.Y.9	A.Y.10
<b>B</b>	<b>Administrative Area</b>												
7	Maintenance Room	10.25	-	-	-	1	1	-	-	-	-	-	-
8	Security	10.09	3	-	-	1	-	-	-	-	-	-	-
9	Housekeeping	10.42	-	-	1	1	-	-	-	-	-	-	-
10	Examination Control Office	34.33	-	-	-	1	1	-	-	-	-	-	-
11	Pantry for Staff	23.7	1	-	-	1	1	-	-	-	-	-	-
12	Placement Office	37.07	-	-	-	1	-	-	-	-	-	-	-
13	Reception	68.22	10	-	-	1	1	-	-	-	-	-	-
14	Meeting Room	25.96	8	-	-	1	1	-	-	-	-	-	-
<b>Total Carpet Area</b>				-	<b>53</b>	<b>499</b>	<b>440</b>	<b>41</b>	<b>41</b>	<b>21</b>	-	-	-

## 14.2 Living and Dining: 10 Year Hostel Master Plan

The students and staff of PIU will have access to residential facilities at the University campus in Vapi. Starting from the academic year 2024-25, hostel accommodations for students will be available on a double-sharing and single-sharing basis. Additionally, residential facilities for faculty members will also be provided on campus from 2024-25. Over time, within Phase 1 of the infrastructure development plan, residential accommodations for non-teaching staff, higher management personnel, and guest house facilities will be completed. Detailed projections of the residential facilities at the PIU campus, along with area requirements, are provided below.

**Table 7: Residential Facility Project and Area Requirement at PIU Campus**

Sr. No.	Type of Infrastructure	Required Carpet Area (in Sq Mt.)	Capacity (in terms of Students / Unit)	PHASE 1					PHASE 2				
				2024-25	2025-26	2026-27	2027-28	2028-29	2029-30	2030-31	2031-32	2032-33	2033-34
				A.Y.1	A.Y.2	A.Y.3	A.Y.4	A.Y.5	A.Y.6	A.Y.7	A.Y.8	A.Y.9	A.Y.10
<b>Residential Area</b>													
	<b>Hostels</b>												
1	UG (Dual Sharing)	28	2	9	18	36	36	18	-	-	-	-	-
2	PG Program (One Sharing)	15	1	-	-	-	20	53	-	-	-	-	-
3	Ph. D. (1 BHK)	60	1	-	-	-	-	-	-	-	-	-	-
4	Executive (One Sharing)	20	1	10	15	-	-	-	-	-	-	-	-
5	Faculty Housing (Per unit)	100	1	2	5	10	19	-	-	-	-	-	-
6	Provost's quarter	300	1	-	1	-	-	-	-	-	-	-	-
7	Staff quarter	75	2	4	6	11	22	-	-	-	-	-	-
8	Guest House	200	2	-	2	1	-	-	-	-	-	-	-
9	Research Associates/ Warden	75	1	1	-	-	2	-	-	-	-	-	-
10	Dining Hall/ Kitchen/ Storage	500		1	-	-	-	-	-	-	-	-	-
11	Hostel office/ Reading room/ Common room	200		1	-	-	-	-	-	-	-	-	-
<b>Total Carpet Area</b>				<b>1,727</b>	<b>2,454</b>	<b>2,983</b>	<b>4,964</b>	<b>1,296</b>	<b>-</b>	<b>-</b>	<b>-</b>	<b>-</b>	<b>-</b>

### 14.3 Amenities

The infrastructure at the PIU campus is designed to provide top-notch services and amenities, ensuring a well-rounded and enriching experience for both students and staff. The campus will feature a cafeteria offering a variety of dining options, a well-equipped medical centre for healthcare needs, and a sports club/gymnasium to promote physical fitness and well-being. Additionally, a shopping centre will cater to everyday needs, while an auditorium/ amphitheatre will host cultural events, seminars, and lectures. A studio/display centre will serve as a space for creative and academic exhibitions. These amenities are thoughtfully integrated to offer a relaxing environment and encourage participation in extracurricular activities, contributing to a vibrant and dynamic campus life at PIU. The details of amenity facility plan offered at PIU along with the area requirement is mentioned below.

**Table 8:** Detail Plan of Amenity Facility at PIU

Sr. No.	Type of Infrastructure	Required Carpet Area (in Sq Mt.)	Capacity (in terms of Students / Unit)	PHASE 1					PHASE 2				
				2024-25	2025-26	2026-27	2027-28	2028-29	2029-30	2030-31	2031-32	2032-33	2033-34
				A.Y.1	A.Y.2	A.Y.3	A.Y.4	A.Y.5	A.Y.6	A.Y.7	A.Y.8	A.Y.9	A.Y.10
<b>C</b>	<b>Amenities Area</b>												
1	Toilets (Ladies & Gents)	209.51	-	-	-	-	1	-	-	-	-	-	-
2	Boys Common Room	80.91	-	-	-	-	1	-	-	-	-	-	-
3	Girls Common Room	75.76	-	-	-	-	1	-	-	-	-	-	-
4	Cafeteria	169.15	-	-	-	-	-	-	-	-	-	-	-
5	Stationery Store & Reprography	10.04	-	-	-	-	1	-	-	-	-	-	-
6	First Aid + Sick Room	10.16	-	-	-	-	1	-	-	-	-	-	-
7	Sports Club / Gymnasium	300	-	-	1	-	-	-	-	-	-	-	-
	<b>Other Amenities</b>												
1	Auditorium/ Amphitheatre	350	300	-	1	-	-	-	-	-	-	-	-
2	Medical Centre	25	6	1	-	-	-	-	-	-	-	-	-
3	Shopping Centre	250	-	-	-	1	-	-	-	-	-	-	-
4	Studio/ Display Centre	170	-	-	-	-	-	-	-	-	-	-	-
	<b>Total Carpet Area</b>			<b>25</b>	<b>650</b>	<b>250</b>	<b>310.62</b>	-	-	-	-	-	-

### 14.4 IT and Digital Infrastructure

In its commitment to developing a world-class institution, Plastindia International University (PIU) has pledged to utilize state-of-the-art facilities across its campus. The following details outline the specific building infrastructure area requirements essential for developing the IT Infrastructure area at PIU.

**Table 8:** Detail Plan of Amenity Facility at PIU

Sr. No.	Type of Infrastructure	Required Carpet Area (in Sq Mt.)	Capacity (in terms of Students / Unit)	PHASE 1					PHASE 2				
				2024-25	2025-26	2026-27	2027-28	2028-29	2029-30	2030-31	2031-32	2032-33	2033-34
				A.Y.1	A.Y.2	A.Y.3	A.Y.4	A.Y.5	A.Y.6	A.Y.7	A.Y.8	A.Y.9	A.Y.10
<b>D</b>	<b>IT Infrastructure Area</b>												
1	Server Networking Room	30	-	-	-	1	-	-	-	-	-	-	-
2	Telecommunication Equipment Room	32	-	1	-	-	-	-	-	-	-	-	-
	<b>Total Carpet Area</b>			<b>32</b>	<b>-</b>	<b>30</b>	<b>-</b>	<b>-</b>	<b>-</b>	<b>-</b>	<b>-</b>	<b>-</b>	<b>-</b>

### 14.5 Sustainability and Green Initiatives

Plastindia International University is committed to embedding sustainability and green initiatives at the core of its Institutional Development strategy. PIU's infrastructure and operations are designed to minimize environmental impact and promote eco-friendly practices. Conscious sustainability efforts include the implementation of energy-efficient buildings, extensive use of renewable energy sources (Solar energy), and water conservation systems. The campus is planned to have green spaces to foster a connection with nature, encouraging biodiversity and providing a calming environment for learning and research. Additionally, PIU prioritizes waste management and recycling programs to ensure responsible resource use.

These initiatives reflect PIU's dedication to nurturing a sustainable future and instilling environmental consciousness in its students and staff.

CHAPTER

# 15

**Innovating Academics**

## Innovating Academics

PIU is dedicated to revolutionizing education through a commitment to academic innovation. This mission begins with conceiving and evolving a robust institutional strategy based on comprehensive analysis and informed decision-making. By aligning every academic and administrative activity with the university's vision, PIU ensures that its initiatives are purposeful and forward-thinking.

### 15.1 PIU's Integrated Learning Strategy

At Plastindia International University (PIU), the integration of the academic system is designed to provide a cohesive and comprehensive educational experience. PIU's approach ensures that all aspects of the academic environment are consistent, promoting a seamless flow of information, resources, and learning opportunities.

PIU curriculum is planned to integrate knowledge from multiple disciplines, providing students with a holistic understanding of complex issues. This interdisciplinary approach encourages cross-disciplinary collaboration and innovation. PIU works closely with industry partners to ensure that the curriculum is aligned with current and future industry needs, helping students acquire the skills and knowledge necessary for professional success.

Courses are often co-taught by faculty members from different disciplines, enhancing the learning experience by providing diverse perspectives and expertise. PIU actively involves industry professionals in teaching and curriculum development to ensure that students receive practical insights and real-world applications of theoretical concepts.

PIU plans to utilize advanced digital platforms to deliver course content, facilitate communication, and manage assessments. These platforms enable students to access resources anytime and anywhere, enhancing flexibility and convenience. Teaching methods at PIU combine traditional classroom instruction with online learning, allowing for more personalized and adaptive learning experiences.

Dedicated research centres shall focus on cutting-edge topics, fostering innovation and collaboration among students, faculty, and industry partners. These centres will provide a hub for research activities and technological advancements. PIU shall offer resources and guidance to help students and faculty protect and commercialize their research outcomes, encouraging innovation and entrepreneurial initiatives.

The academic system is designed to accommodate individual student needs and career goals. Personalized learning plans shall ensure that each student can tailor their education to their specific interests and aspirations. Experienced mentors provide guidance and support to students, helping them navigate their academic and professional journeys, which is integral to student success and development.

The integration of academic system shall also ensure that all educational materials and resources are accessible to students with disabilities. This commitment to inclusivity guarantees that every student has the opportunity to succeed. Our classrooms are designed to support diverse learning styles and needs, creating an inclusive and supportive educational environment.

Implementation of continuous assessment methods ensure monitoring of student progress and identify areas for improvement. Feedback from these assessments informs curriculum updates and teaching strategies. Actively seeking input from students, faculty, industry partners, and other stakeholders, shall ensure that our academic system remains dynamic and responsive to changing needs.

Integrating sports, music, and other extracurricular activities into the core curriculum, supporting the overall development of students and helping build a well-rounded skill set. The programmes include training in communication, teamwork, leadership, and other essential soft skills, which are crucial for professional and personal success.

The robust financial planning and resource management strategy at PIU shall help to ensure the sustainability and growth of academic programs. This includes securing funding, managing budgets, and optimizing resource allocation. PIU is committed to continuously invest in state-of-the-art infrastructure and facilities, including academic buildings, research labs, and digital resources, ensuring that the students and faculty have access to the best possible learning and teaching environments.

By integrating these elements into our academic system, PIU creates a cohesive, dynamic, and forward-thinking educational environment. Such holistic approach shall ensure that the students receive a comprehensive education that prepares them for the challenges and opportunities of the future.



## 15.2 State-of-the-art Academic Pedagogy

At Plastindia International University (PIU), our state-of-the-art pedagogy is designed to provide a comprehensive and dynamic learning experience that aligns with the demands of the modern world. By integrating experiential learning, skill development, and a blend of traditional and modern educational methods, we ensure that students are knowledgeable, highly employable, and adaptable to future challenges.

Pedagogy at PIU is fundamentally learner-centric, focusing on the needs, strengths, and interests of each student. By prioritizing student engagement and active participation, we create a learning environment that is both supportive and challenging, encouraging students to take ownership of their educational journey.

The foundation of PIUs pedagogical approach is the inclusion of substantial experiential learning components related to students' specializations. This hands-on learning can occur in real-world environments or through advanced virtual simulations, providing students with practical, immersive experiences that enhance their understanding and application of theoretical concepts.

PIU also emphasize the importance of skill development-based value-added courses. These courses are offered as separate modules and are often taught by industry professionals and experts. This approach ensures that students gain contemporary insights and skills that are directly applicable to their future careers, bridging the gap between academic learning and professional requirements.

In addition to specialization-specific skills, PIU provide modules on general skills aimed at enhancing the employability of our students. These modules focus on improving professional knowledge and capabilities, such as communication, teamwork, leadership, and critical thinking. By fostering these essential skills, PIU prepares the students to excel in diverse professional environments.

The pedagogy at PIU is designed to make teaching and research unique and forward-thinking, incorporating concepts from Industry 4.0 and Industry 5.0. This includes the use of advanced technologies, data analytics, and innovative methodologies that reflect the latest trends and practices in the industry. By doing so, we ensure that our students are at the forefront of technological and industrial advancements.

We believe in an appropriate mix of traditional and modern teaching methods. While maintaining the strengths of conventional educational techniques, we actively incorporate modern approaches and technologies. The enhanced usage of blended learning modes, which combine online and face-to-face instruction, provides a flexible and dynamic learning experience tailored to individual student needs.

To support inclusive education, PIU makes teaching and learning materials accessible to Persons with Disabilities (PwDs). This ensures that all students, regardless of their physical abilities, have equal opportunities to learn and succeed.

Recognizing the importance of holistic development, PIU integrates activities such as sports, music, and other extracurricular pursuits into the core curriculum. These activities not only enrich the student experience but also promote physical health, creativity, and social skills, contributing to the overall development of well-rounded individuals.

### 15.3 Research & Innovation Strategies

At Plastindia International University (PIU), research and innovation strategies are anchored in the development of intellectual facilitator that serve as the foundation for numerous productive activities. By fostering basic research, nurturing innovative ideas, and advancing general-purpose technologies, PIU cultivates an environment suitable for information production, educational enhancement, and social value creation. These intellectual arrangements act as the building blocks of growing, dynamic systems, driving continuous progress and innovation. Moreover, PIU places a strong emphasis on intellectual property rights, ensuring that research outcomes are effectively protected and commercialized, thus bridging the gap between academic research and real-world application.



#### 15.3.1 Centre of Excellence in Sustainability

Plastindia International University (PIU) envisions to establish the Centre of Excellence in Sustainability, an ambitious initiative dedicated to advancing the frontiers of Sustainable Polymers, Sustainability & Technology, Bioplastics, and Plastics Recycling. This Centre is intended to be a foundation in driving innovation and fostering practical solutions to modern environmental challenges through a multidisciplinary approach.

The Centre will be equipped with state-of-the-art research facilities designed to support ground-breaking research and development in the field of sustainability. It will focus on exploring and advancing new materials and technologies that promote environmental stewardship and resource efficiency. By leading cutting-edge research initiatives, the Centre will play a pivotal role in the development and implementation of sustainable practices and technologies.

Integral to the Centre of Excellence's mission is the creation of a dynamic educational environment. The Centre will offer a range of specialized short-term courses tailored to both prospective students and professionals seeking to deepen their knowledge and skills in sustainability. These courses will be delivered through a blended learning model, combining online modules with hands-on, practical training. This approach ensures that participants gain both theoretical insights and practical experience, preparing them to address real-world sustainability challenges effectively.

Furthermore, the Centre will serve as a nexus for collaboration and partnership. It will actively engage with a diverse network of stakeholders, including industry leaders, government agencies, academic institutions, and non-governmental organizations. By fostering these collaborative relationships, the Centre aims to bridge the gap between innovative research and practical application, facilitating the development of integrated solutions that address the needs of both the industry and society.

The Centre will also focus on capacity building and professional development by organizing a variety of events, including workshops, webinars, and seminars. These events will feature contributions from leading experts and practitioners, offering insights into the latest trends, best practices, and emerging technologies in the field of sustainability. Through these interactions, the Centre will create a vibrant learning community and contribute to the continuous advancement of knowledge in sustainability.

In addition to its research and educational activities, the Centre will engage in global outreach and collaboration. It will participate in international conferences, form strategic alliances with global partners, and stay abreast of global developments in sustainability. This global engagement will ensure that the Centre remains at the forefront of innovation and contributes to the global dialogue on sustainability.

By establishing the Centre of Excellence in Sustainability, PIU aims to enhance its leadership role in sustainability education and research. The Centre will drive progress in sustainable practices within the plastics and polymers industry and beyond, contributing significantly to environmental protection and sustainable development.

### **15.3.2 Intellectual Property Right, Patent, and Trademark Enablers**

At Plastindia International University (PIU), the management and protection of Intellectual Property (IP) are pivotal to fostering innovation and enhancing the University's research impact. The development and utilization of intellectual property rights, patents, and trademarks play a crucial role in supporting our mission to advance knowledge and contribute to the global sustainability agenda.

PIU recognizes the importance of a robust Intellectual Property Rights (IPR) framework in safeguarding the innovations and research outcomes of its faculty, researchers, and students. The university is committed to establishing clear policies and procedures for the identification, protection, and commercialization of intellectual property generated within its academic and research activities.

In conjunction with patents, PIU will also implement a trademark management system to protect the university's brand identity and ensure the integrity of its research products and services. This system will oversee the registration and protection of trademarks, including logos, product names, and research tools. Protecting these trademarks helps maintain the distinctiveness and reputation of PIU's intellectual property, preventing unauthorized use and strengthening the university's position in the global market.

To support effective IP management, PIU will provide education and training programs for faculty, researchers, and students. These programs will cover various aspects of intellectual property, including patent applications, trademark registration, copyright issues, and commercialization strategies. By equipping the university community with knowledge and skills in IP management, PIU aims to foster a culture of innovation and ensure that intellectual property assets are effectively utilized and protected.

PIU is committed to facilitating the commercialization of its intellectual property through strategic industry collaborations and partnerships. The university will establish mechanisms to connect researchers with industry partners, venture capitalists, and commercialization experts. These collaborations will support the translation of research findings into viable products and services, enhancing the impact of PIU's innovations and contributing to economic development.

Through these initiatives, PIU aims to create a thriving environment for innovation, protect its intellectual assets, and contribute to the advancement of sustainable technologies and solutions on a global scale.

### 15.3.3 Targeted and Collaborative Research

One of the key prospects of the research at Plastindia International University is to perform quality and meaningful research. The targeted research at PIU involves a deliberate and strategic approach to recognizing and nurturing promising fields of study that align with both the university's strengths and global research trends. By focusing on specific and targeted areas, PIU intends to connect the expertise of its faculty members to push the boundaries of knowledge and drive innovation. This approach not only enhances the institution's research portfolio but also fosters the creation of intellectual property rights (IPR) and contributes to the development of an international reputation.

The university also envisions to provide robust support for faculty members engaged in targeted research. This includes access to cutting-edge resources, research funding, and administrative assistance to facilitate the research process. PIU also encourages faculty to publish their findings in high-impact journals and present their work at international conferences, thereby elevating the visibility and impact of their research.

Collaboration is a key element of PIU's research strategy. The university actively seeks to build partnerships with other academic institutions, research organizations, and industry leaders. Collaborative research initiatives allow for the amalgamation of expertise, resources, and perspectives, leading to more comprehensive and impactful research outcomes.

Through strategic collaborations, PIU aims to address complex, interdisciplinary challenges and drive advancements in areas of significant global interest. These partnerships also facilitate the exchange of knowledge and best practices, enhancing the quality and scope of research conducted at the university.

By adopting a strategic approach to targeted and collaborative research, PIU positions itself at the forefront of innovation and academic excellence. The university's efforts in these areas contribute to the creation of a robust intellectual property portfolio and strengthen its international brand. Through dedicated research initiatives and strategic partnerships, PIU not only advances the frontiers of knowledge but also enhances its global standing as a leading institution in sustainable and impactful research.



### 15.3.4 Industry and Institutional collaboration & Consultation

Plastindia International University (PIU) is strategically situated in Vapi, Gujarat, a prominent hub for the plastics industry. This location has been chosen with foresight, recognizing Vapi's status as a key center for plastics manufacturing and innovation. The proximity to this vibrant industrial landscape offers PIU a unique and advantageous position to forge robust collaborations with a diverse array of plastics industry stakeholders.

The close proximity to the industry allows PIU to align its research endeavors with current industry needs and trends, ensuring that its work remains relevant and impactful. Researchers at PIU can leverage real-world insights and industry expertise to drive innovation and address key challenges facing the plastics sector. This synergy between academic research and industrial practice fosters an environment of cutting-edge discovery and application.

PIU's location provides access to advanced industry research facilities. University researchers can utilize these state-of-the-art facilities, which are often equipped with cutting-edge technology and resources that may not be available within the university's own infrastructure. This access allows PIU researchers to conduct high-quality research, perform complex experiments, and accelerate the development of new technologies.

The ability to leverage both industry expertise and facilities enriches the research environment at PIU. It enables PIU to address pressing challenges in the plastics sector, develop practical solutions, and contribute to industry advancements. The collaboration with industry partners fosters a dynamic exchange of knowledge and best practices, further enhancing the quality and scope of research conducted at PIU. Furthermore, continued collaborative research has a potential to result in an increased number of patents and publications, amplifying PIU's impact and influence in the field.

In addition to research collaborations, PIU also plans to offer consultation services to industry partners. These services include expert advice, technical support, and strategic guidance on various aspects of research and development, technology implementation, and industry practices. By providing tailored consultation services, PIU helps industry partners navigate complex technical challenges, optimize processes, and integrate cutting-edge technologies into their operations.

Additionally, consultancy services shall serve as a valuable revenue stream for PIU. By leveraging its expertise to address specific industry needs in the field of Sustainability and Plastics, the university can generate income that supports its research activities, infrastructure development, and academic programs. This financial support is crucial for sustaining and expanding PIU's research capabilities and academic offerings.

Consultancy often uncovers new research gaps and opportunities based on industry needs. PIU aims to use these insights to guide its research agenda, explore new areas of study, and develop innovative solutions. This alignment with industry challenges drives forward-thinking research and enhances the university's contribution to addressing global issues.

The impact of industry and institutional collaboration at PIU shall reflect on the successful transformation of academic research into practical applications, the development of innovative technologies, and the enhancement of industry practices.

CHAPTER

# 16

**Digitalization**

## Digitalization

Digitalization has taken the world by storm due to its capacity to cause substantial transformations in institutes function by improving their internal processes. For Plastindia International University (PIU), implementing a comprehensive digitalization strategy is essential for fostering innovation, improving academic performance, and meeting the evolving needs of students and faculty. Recognizing the critical importance of digitalization, PIU is dedicated to creating a fully digital campus. This includes the development of online portals and applications, the provision of a digital library and learning resources, and the implementation of an Enterprise Resource Planning (ERP) system.



### 16.1 Completely Digital Campus

PIU aims to build a complete digital campus that integrates technology seamlessly into its educational and administrative frameworks. A robust IT infrastructure is essential for supporting the digital campus. PIU has invested on high-speed internet connectivity across all academic blocks, hostels, and administrative buildings. This infrastructure will be continuously upgraded to keep pace with technological advancements and increasing demands. High-speed internet will ensure reliable access to digital resources and facilitate smooth communication across the campus.

The university has equipped its classrooms with state-of-the-art technology to support interactive and blended learning. Smart classrooms feature interactive whiteboards, projectors, and advanced audio-visual equipment. These tools will enable dynamic teaching methods, including real-time interaction with online content and multimedia presentations. The integration of Learning Management Systems (LMS) within these classrooms shall allow for a hybrid approach to education, blending traditional face-to-face instruction with online learning opportunities.

PIU aims to create a virtual learning environment that supports both synchronous and asynchronous learning. This will involve the use of video conferencing tools, discussion forums, and collaborative platforms. Virtual classrooms will enable real-time interaction between students and instructors, while asynchronous platforms will provide flexibility for students to engage with course materials and assignments on their own schedule.

Integrated campus management systems shall also be developed to streamline administrative processes. These systems will cover a range of functions, including admissions, registration, attendance tracking, and grading. By automating these processes, PIU aims to reduce paperwork, enhance efficiency, and improve the accuracy of student records. The systems will also facilitate data-driven decision-making by providing real-time insights into academic and administrative operations.

## **16.2 Online Student and Faculty Portals/Applications**

The development of online portals and applications is crucial for enhancing communication, collaboration, and access to information for both students and faculty. The portal shall offer the students easy access to register for courses, manage their schedules, and track their progress in respect to grades and academic transcripts. The system will streamline the registration process and provide real-time updates on course availability and prerequisites.

Students will be able to pay tuition fees and other additional fees through secure online payment systems integrated within the portal. This feature will simplify financial transactions and reduce administrative overhead. The portal will include communication tools for students to connect with faculty, peers, and academic advisors.

The faculty portal will offer tools and resources to support teaching, research, and collaboration. Faculty members will be able to create and manage course syllabus, assignments, and grading through the portal. The system will streamline the course administration process and support efficient management of instructional activities. The portal will provide faculty with access to a wide range of research databases and academic journals. This resource will support research activities and keep faculty members informed about the latest developments in their fields.

Both the student and faculty portals will be designed to be mobile-friendly, allowing users to access information and services on-the-go. Mobile access will enhance engagement and facilitate timely communication, ensuring that users can stay connected and informed regardless of their location.

### 16.3 Digital Library and Digital Learning

The digital library and digital learning resources are integral components of PIU's digitalization strategy, providing students and faculty with access to a wealth of information and learning materials. As a part of its plan PIU has registered for National Digital Library. The digital library offers a user-friendly interface that allows for easy navigation and searching. Students and faculty will be able to quickly find and access the resources they need. The library includes access to both subscription-based databases and open-access resources. The digital library provides tools for citation management and research assistance.

The Learning Management System will support online and blended learning by providing a platform for course content delivery and student engagement. The LMS facilitates the delivery of course content, including video lectures, readings, and quizzes. This will support both in-person and online learning experiences, allowing for a flexible and engaging educational environment. It will include discussion forums and collaborative project tools to foster interaction and teamwork among students. These features will support active learning and enhance the educational experience. It will also provide tracking and reporting tools to monitor student progress and performance.

PIU plans to develop e-learning modules and online courses that cater to diverse learning styles. These modules shall incorporate interactive elements such as quizzes, simulations, and gamified learning experiences. The goal is to create engaging and effective learning experiences that meet the needs of all students. To support the effective use of digital learning tools, PIU shall offer training and professional development opportunities for faculty.



## 16.4 Enterprise Resource Planning

The implementation of an Enterprise Resource Planning (ERP) system is a critical component of PIU's digital strategy. The ERP system will integrate various administrative functions, providing real-time data and analytics to support decision-making and operational efficiency.

ERP will consolidate data from different administrative functions into a single, unified system. This centralization ensures that information related to admissions, registration, financial transactions, and academic records is accessible in real time, improving data accuracy and reducing redundancy. By integrating various administrative processes, ERP will automate routine tasks such as course scheduling, student enrollment, and fee collection. This integration reduces manual intervention, minimizes errors, and enhances operational efficiency.

ERP shall automate the scheduling of courses, classrooms, and faculty assignments. This automation will optimize resource utilization and ensure that academic activities are organized efficiently. The system will manage student records, including academic performance, grades, and transcripts, in a secure and accessible manner. Faculty and administrators will have real-time access to these records, facilitating timely and accurate decision-making. ERP will automate the tracking of student and faculty attendance, generating reports and alerts for absenteeism. This functionality will streamline attendance management and ensure compliance with institutional policies.

The digitalization of Plastindia International University is a comprehensive initiative that encompasses the establishment of a complete digital campus, the development of online portals and applications, the creation of a digital library and learning resources, and the implementation of an ERP system. By embracing digital technologies, PIU can enhance the educational experience for students and faculty, streamline administrative processes, and position itself as a leader in modern higher education.

CHAPTER

17

**Human Resource Management**

## Human Resource Management

Human Resource Management (HRM) serves as a critical function that shapes the institution's success by effectively managing its human capital. At its core, HRM encompasses strategic planning, policy implementation, and continuous evaluation to optimize the contribution of faculty, staff, students and researchers towards achieving the university's mission, vision, and goals.

At PIU, HRM is a pivotal function designed to align with the institution's mission and vision while optimizing the contributions of faculty, staff, students, and researchers. The HRM strategy at PIU is centered on several key areas to ensure effective management and development of human capital. These key areas will include the development of clear HR policies and procedures designed to support PIU's objectives and foster a positive work environment. Strategic planning within HRM will focus on advancing the university's core areas of plastics education, sustainability, and research excellence.



## 17.1 Students, Faculty and Researchers & Staff Empowerments

### 17.1.1 Students Empowerment

At PIU for student empowerment driving initiatives that foster leadership skills, critical thinking, and personal growth. By offering leadership development programs, including workshops, seminars, and mentorship opportunities, aimed at nurturing students' leadership qualities and preparing them for future roles in academic and beyond. These initiatives will empower students in future to take on leadership responsibilities and contribute actively to the university community.

Through student governance and participation in decision-making processes via student councils, committees, and forums, it empowers students to shape campus life and governance. This involvement instills a sense of ownership and responsibility, encouraging students to voice their opinions and implement positive changes within the university.

To provide access of education for the deserving students, PIU offers merit-based scholarships and financial aid tailored to un-represented groups. These initiatives aim to attract a diverse range of talented students who might otherwise face financial barriers. By providing equitable opportunities, we ensure that deserving students can pursue their educational goals regardless of their socio-economic background.



### 17.1.2 Faculty and Researchers Empowerment

Empowering faculty members at PIU involves fostering a supportive and stimulating environment conducive to excellence in teaching, research, and professional development. Teaching excellence will be promoted through dedicated workshops focused on pedagogical methods, technology integration, and assessment strategies. These initiatives aim to enhance teaching effectiveness and improve student learning outcomes across diverse academic disciplines. To facilitate impactful research comprehensive research support, including access to state-of-the-art facilities, collaboration opportunities, and administrative assistance. This enables faculty to conduct cutting-edge research and publish influential work that contributes to their fields of expertise.



Transparent criteria and evaluation processes ensure fairness and encourage faculty to excel in their respective roles, thereby strengthening PIU's academic reputation and fostering a supportive professional environment.

### 17.1.3 Staff Empowerment

Staff empowerment is a cornerstone of PIU for fostering a dynamic and inclusive work environment. Recognizing that our staff and administrative teams are integral to the institution's success, PIU is dedicated to creating a supportive culture where staff members are encouraged to take initiative, develop their skills, and contribute meaningfully to the university's mission.

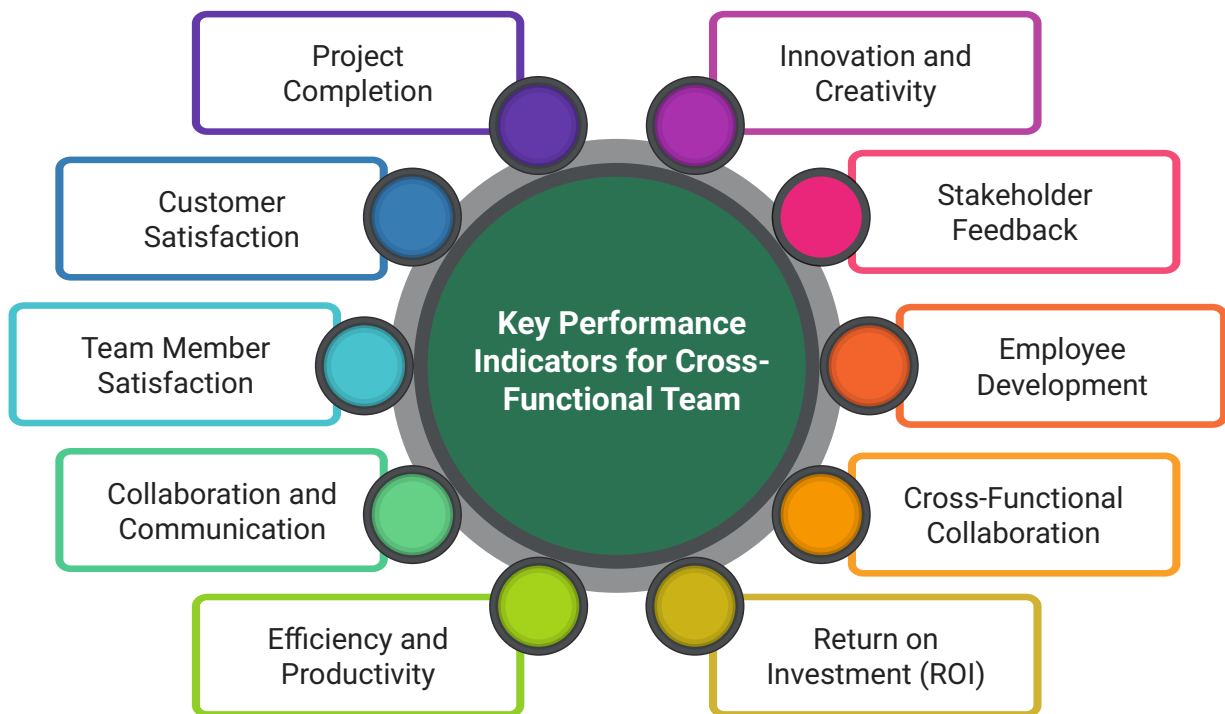
Facilitating interdisciplinary research projects, funding opportunities, and partnerships with industry and academic is central to PIU's approach. By encouraging collaborative research initiatives, the university advances knowledge and fosters innovation in diverse fields, contributing to academic excellence and societal impact.



Ensuring a seamless integration of new staff members, PIU implements inclusive induction protocols that provide comprehensive onboarding and orientation processes. This approach will familiarize new hires with PIU's culture, policies, and work environment, promoting a sense of belonging and enabling them to contribute effectively from the outset.

### 17.2 Cross Functional Enablers

A cross-functional team is defined as a collaborative group comprising individuals from various academic departments and administrative units, each bringing unique expertise and perspectives. For enabling this PIU encompasses a range of initiatives aimed at fostering collaboration, recognition, resilience, and leadership across the community. These enablers are integral to enhancing effectiveness and promoting a supportive environment for all members of the University.



**Figure 1:** Empowering Cross Functional Teams for Efficiency

PIU will establish a broad range of recognition categories that celebrate various forms of excellence across different function. This will include awards for research innovation, exceptional mentorship, community service, and transformative leadership to the team. By acknowledging achievements in these diverse areas, PIU ensures that contributions from all sectors of the university are valued and highlighted.

To address diverse needs and ensure coordinated efforts, PIU will implement cross-functional well-being teams. These teams will include representatives from different departments such as student services, human resources, academic affairs, and counselling services. By working together, these teams will design and implement resilience programs and mental health services that cater to the needs of all university members. Additionally, wellness programs that address physical, emotional, and mental health. This includes workshops on stress management, mindfulness, and coping strategies, as well as access to counselling and therapy services.

PIU will establish comprehensive leadership development programs tailored to staff and faculty. These programs will include workshops, seminars, and mentorship opportunities focused on leadership skills, strategic thinking, and change management. The aim is to prepare individuals to lead initiatives, drive innovation, and influence positive change within their departments and across the university.

### 17.3 Strategic Funding and Emotional Support

PIU strategic funding approach and robust emotional support networks are integral components of its commitment to nurturing a thriving academic community. These initiatives are designed to empower early-career researchers, support student success, and enhance the institution's overall research profile.

#### 17.3.1 Strategies for Funding

Strategic funding strategies designed to empower early-career researchers and foster ground breaking projects that drive innovation and excellence across various disciplines Strategic funding strategies aimed at empowering early-career researchers and attracting pioneering projects. By providing targeted financial support and incubation grants, we enable researchers to explore novel ideas and advance impactful initiatives. This investment not only enhances the research capabilities of faculty but also elevates PIU's research profile, positioning us at the forefront of innovation in our respective fields. PIU encourages researchers to explore unconventional ideas and tackle complex challenges. This approach not only promotes PIU that attracts top-tier talent and collaborative partnerships.



To further enhance strategic funding strategies at PIU, we can implement several additional initiatives. Establishing dedicated funding programs such as endowments, grants and innovation vouchers can with the necessary financial support. Additionally, creating partnerships with industry leaders and governmental agencies can facilitate access to external funding sources and collaborative research opportunities. These comprehensive measures will not only bolster the research capabilities of our faculty but also strengthen PIU's position as a hub for innovation and academic excellence.

### **17.3.2 Emotional Support Networks**

Recognizing the challenges inherent in academic pursuits, PIU embeds robust emotional support networks throughout our community. These networks are designed to foster resilience and well-being among students, staff, and faculty. Through initiatives such as emotional intelligence training and personalized support services, we empower individuals to manage the demands of academia with greater ease and effectiveness. By nurturing a supportive environment where individuals feel valued and cared for, we cultivate a culture of mutual support and personal growth.

Fostering collaborations with external mental health professionals and organizations can bring in specialized expertise and resources, ensuring comprehensive care. By continuously enhancing these support structures, PIU will address a thriving academic environment where individuals are empowered to reach their full potential.

## **17.4 Enablers for Pedagogical Innovation**

PIU strategic funding approach and robust emotional support networks are integral components of its commitment to nurturing a thriving academic community. These initiatives are designed to empower early-career researchers, support student success, and enhance the institution's overall research profile.

### **17.4.1 Fellowships for Pedagogical Innovation**

To foster a culture of teaching excellence, PIU will establish specialized fellowships designed to empower faculty members to innovate in their teaching practices. These fellowships will offer financial support and dedicated time for faculty to pursue several key initiatives. Faculty will be encouraged to undertake curriculum redesign efforts, aiming to incorporate interdisciplinary perspectives and industry-relevant skills into their courses.

Additionally, support will be provided for pedagogical research, focusing on exploring effective teaching methodologies and assessment practices with an emphasis on evidence-based approaches. PIU will also prioritize the integration of cutting-edge educational technologies such as virtual reality (VR), augmented reality (AR), and simulation tools, aimed at enhancing student engagement and improving learning outcomes across various academic disciplines.

### **17.4.2 Programs for Curriculum Design**

PIU places significant emphasis on dynamic and industry-aligned curriculum design, recognizing its pivotal role in preparing students for the evolving demands of the plastics and polymers sector. To achieve this, PIU will introduce targeted programs aimed at fostering innovative curriculum development practices. This includes forging strategic partnerships with industry leaders to stay abreast of emerging trends and skill requirements within the field.

Moreover, to prioritize experiential learning through project-based initiatives that replicate real-world challenges, thereby equipping students with practical skills and enhancing their problem-solving abilities. Additionally, curriculum will be of global perspectives by facilitating international collaborations, exchange programs, and inviting esteemed scholars and industry experts to deliver guest lectures. These initiatives are geared towards providing students with a comprehensive educational experience that is both relevant and globally competitive.

### 17.4.3 Integration of Educational Technologies

PIU is committed to harnessing the transformative power of educational technologies to enhance the quality of teaching and learning. Central to this commitment is the integration of cutting-edge tools and platforms aimed at enriching the educational experience across all facets of the university. This initiative includes the adoption of a robust Learning Management System (LMS) to streamline course delivery, facilitate student interaction, and improve assessment processes.

Additionally, to develop virtual laboratories that replicate practical experiments, providing students with a safe and accessible environment to engage in hands-on learning remotely. Furthermore, the initiative of interactive multimedia content such as video lectures, animations, and simulations, tailored to diverse learning styles to foster deeper comprehension and engagement among students. These efforts underscore PIU's dedication to leveraging technology to create a dynamic and effective learning environment that prepares students for success in the modern educational landscape.

### 17.4.4 Faculty Development and Support

At PIU, faculty members are esteemed as the cornerstone of pedagogical excellence, and the university is dedicated to offering robust support and opportunities for their professional development. This commitment includes organizing training workshops and seminars focused on pedagogical best practices, instructional design, and the effective integration of educational technologies. Additionally, PIU emphasizes mentorship programs that pair junior faculty with experienced mentors, fostering a culture of continuous improvement and knowledge exchange within the academic community.

Furthermore, the institution values the contributions of its faculty and intends to establish recognition programs to honour those who excel in teaching and curriculum development. These initiatives underscore PIU's commitment to nurturing a vibrant and supportive environment where faculty can thrive and contribute effectively to student success and institutional excellence.

Through strategic investments in faculty development, curriculum design, and educational technologies, PIU will prepare students to thrive in a rapidly evolving global landscape, equipping them with the knowledge and skills needed to lead in the plastics industry of the future.



## 17.5 Supportive- Facilitative Enablers

Supportive facilitative enablers refer to the resources, structures, and practices that help create an environment where academic and administrative goals can be achieved effectively. This emphasis extends to students, faculty, staff, and administration, promoting transparent communication, mutual respect, and recognition of each individual's dedication and contributions. PIU aims to bolster collaboration, accountability, and a collective commitment to institutional advancement.

Recognizing the criticality of operational continuity and reliability, PIU aims to implement alternative strategies and support systems. These initiatives are meticulously designed to ensure seamless delivery of commitments, encompassing facilities upkeep, faculty support, exam logistics, and prompt result disclosures. Through proactive contingency planning, PIU effectively manages risks and sustains uninterrupted academic services, even in unforeseen circumstances.

Moreover, at PIU, cultivating a culture where every student sets and pursues goals is pivotal to their academic journey and personal development. The institution actively encourages students to articulate and strive for their educational and personal aspirations. Through structured guidance and informative programs on available opportunities, PIU empowers students to chart their paths confidently, fostering proactive engagement and realizing their potential. These initiatives underscore PIU's commitment to holistic student development and institutional excellence.

By implementing the necessary practices and fostering collaboration, these can significantly enhance the effectiveness and success of faculty, staff, and students.

CHAPTER

18

**Student Management**

## Student Management

Student management at Plastindia International University (PIU) is dedicated to providing robust support and services that prioritize the holistic development and academic achievement of every student. Fundamental to this commitment is academic advising, where personalized guidance helps students navigate their academic journey, make informed course selections, and explore career pathways aligned with their aspirations.

Additionally, PIU offers comprehensive student support services, including counselling, mentoring, and health services, to address both personal and academic challenges students may encounter. Beyond academics, the university actively promotes extracurricular activities such as clubs, sports, and cultural events, fostering opportunities for students to broaden their horizons, develop leadership skills, and enrich their overall university experience. These initiatives collectively ensure that students at PIU are well-equipped to succeed academically and thrive personally within a supportive and nurturing environment.

### 18.1 Admission and Enrolment Management

Admission and enrolment management at PIU are essential to the university's mission of creating an inclusive and academically enriching environment. It is the framework to the university's approach to managing admissions and enrolments for undergraduate, postgraduate, and doctoral programs, emphasizing the clarity of admission criteria, streamlined processes, and supportive enrolment services.

#### 18.1.1 Admission Criteria

Admission Criteria are meticulously defined to maintain academic excellence and fairness. Each program - undergraduate, postgraduate, and doctoral has specific requirements that are regularly updated to align with industry standards and academic advancements. In Undergraduate Programs Admission is based on academic performance and standardized test scores of entrance exams. The criteria are designed to select students with a strong academic background and potential for success in their chosen fields.



PIU has methodically planned to ensure a smooth and transparent transition for prospective students entering the university. The institution emphasizes clear admission criteria. The application process is streamlined through user-friendly online platforms, enhancing accessibility and facilitating prompt communication of admission decisions. Additionally, PIU is committed for robust enrolment services that support students in navigating course registration, participating in orientation programs, and obtaining essential student IDs. These initiatives are integral to PIU's commitment to fostering a welcoming and efficient enrolment experience, setting a strong foundation for students' academic and personal success at the university.

### 18.1.2 Communication and Support

Effective communication is crucial for ensuring a smooth admission process at PIU. The goal is to ensure that prospective students are well-informed and supported at every stage of their application journey. To achieve this, PIU implements a range of strategies aimed at enhancing transparency and reducing uncertainty. Additionally, personalized assistance is provided to applicants to guide them through the process efficiently.



Automated notifications to design in a way for keeping the applications well-informed and engaged. Real-time application status updates, delivering instant notifications about significant changes in the application process, such as submission confirmations, application reviews, and final decisions. This feature ensures that applicants stay informed about their progress and alleviates concerns about the status of their applications.

By integrating automated notifications with personalized counselling from dedicated admission counsellors, PIU will ensure that applicants are not only kept informed but also receive tailored support throughout their admission journey, fostering a more organized, transparent, and supportive application experience. PIU's approach to communication and support in the admission process underscores its commitment to ensuring a seamless and supportive experience for prospective students. Through automated notifications and dedicated admission counsellors it provides a transparent, organized, and personalized process that helps applicants stay informed, meet deadlines, and receive the guidance they need

## 18.2 Internships and Placements

At PIU internships and placement programs are pivotal to the student management strategy, acting as a crucial bridge between academic learning and industry expectations. The strong industrial connections of PIU with the plastics industry will significantly enhance opportunities for student internships and placements. By leveraging these strong industry ties, PIU can offer its students access to a wide network of professional mentors, cutting-edge projects, and potential career paths, thereby enriching their educational journey and boosting their employability.

### 18.2.1 Internship Excellence

Internship opportunities are strategically integrated into the curriculum, offering students practical experience and industry exposure. Internships includes several key elements designed to bridge the gap between academic learning and real-world application. The Structured Internship Programs at PIU are crafted to complement academic learning with hands-on experience. Interns are assigned projects and tasks that require them to apply theoretical knowledge in practical settings. This structure is crucial for developing problem-solving skills and gaining a deeper understanding of industry practices, effectively bridging the gap between classroom learning and real-world application.



Additionally, the Exposure to Real-World Challenges further enhances the value of internships. By immersing students in the complexities and dynamics of their chosen fields, internships offer practical experience that helps them understand industry demands and trends. This first and experience is essential for equipping students with the skills needed to navigate and succeed in their future careers.

Integral to the internship experience at PIU are Feedback and Evaluation. Internships are closely monitored, and students receive constructive feedback from industry mentors and supervisors. This ongoing evaluation helps students refine their skills, address areas for improvement, and gain valuable insights into their performance and development.

Through these comprehensive internship opportunities, PIU ensures that students are well-prepared for their careers, equipped with practical experience and industry connections necessary to excel in the professional world.

### 18.2.2 Placement Services

The placement services at PIU are intended to strongly support students in their transition from academia to the professional world. At the heart of these services is the dedicated Placement Cell, which plays a crucial role in facilitating campus placements. This cell actively engages with industry recruiters, organizes on-campus recruitment drives, and maintains a robust network of potential employers, ensuring that students have access to a wide array of job opportunities.



In addition, Career Fairs and Networking events are regularly organized to connect students with industry representatives. These events provide valuable opportunities for students to interact with potential employers, learn about job openings, and gain insights into various career paths. The placement cell adopting a proactive approach shall offer personalized career counselling, assisting with job applications, and preparing students for interviews.

### 18.3 Alumni and Relationship

Alumni relationships are integral to the sustained growth and reputation of PIU. It will place significant emphasis on fostering strong connections with its alumni through a range of proactive initiatives. PIU is committed to take an initiative to diverse alumni engagement programs that include reunions, networking events, and professional development workshops. These activities are designed to nurture ongoing relationships between alumni and PIU fostering a sense of community and continuity beyond graduation.

Career support for alumni is a keystone of PIU's alumni relations strategy. It provides ongoing career guidance, facilitates job postings, and offers mentoring opportunities to support alumni in advancing their professional trajectories. By maintaining a robust network of alumni, PIU enhances career prospects for its graduates and reinforces the value of a PIU education in the professional arena.

Furthermore, PIU actively encourages alumni to contribute to institutional development in various capacities. This includes opportunities for alumni to give back through donations that support scholarships, infrastructure enhancements, and academic programs. Alumni are also invited to share their expertise through guest lectures, mentorship programs, and industry partnerships, thereby enriching the educational experience for upcoming and current students and fostering a culture of lifelong learning and engagement.

Through these concerted efforts, PIU ensures that alumni remain integral stakeholders in the university's ongoing success, leveraging their collective experience and support to strengthen its academic offerings, reputation, and impact in the broader community.

These initiatives reflect PIU's dedication to equipping students with the skills, experience, and with industry connections like Plastindia Foundation and Umass Lowell will excel students in their chosen fields. By fostering a seamless integration of academic and professional development, PIU helps students navigate their career paths with confidence and competence, ultimately enhancing their prospects for long-term success in the competitive job market.

CHAPTER

# 19

**Building Networks and Partnerships**

## Building Networks and Partnerships

Building networks and partnerships is a strategic imperative for Plastindia International University to enhance its reputation, expand its reach, and improve its educational offerings over the next ten years. Effective public relations (PR) and outreach strategies will be essential for shaping the public perception of PIU and fostering positive relationships with various stakeholders.



### 19.1 Public Relations and Outreach

Maintaining an active presence on social media will be essential, with engaging content that highlights student and faculty achievements, research breakthroughs, and campus life. PIU will also host and participate in educational fairs, conferences, and community events to showcase its offerings and foster community engagement. Strengthening alumni relations will be a priority, building a strong network to leverage their professional connections and experiences, and engaging them in fundraising activities.

PIU shall host and participate in a variety of events, including educational fairs, conferences, seminars, and community outreach programs. The PIU has regularly participated in various educational industry expos across the country. Noteworthy participations include Plastivision, Vapi Plastshow, Smart Education Expo 2024, and the Education Expo by TV9 Network. As part of outreach activities, the PIU team make regular visits to high schools and coaching centers to educate students about plastics and the career opportunities flourishing in the field of plastics engineering.

Such activities serve as platforms to showcase PIU's academic excellence, innovative research, and community engagement initiatives. Through these events, PIU builds connections with potential students, parents, industry partners, and the broader community. Additionally, PIU leverages these opportunities to gather feedback and insights from stakeholders to continuously improve its offerings and strategies.

Alumni relations will be a key focus area for PIU. The university will build a strong alumni network to leverage their professional connections and experiences. Regular alumni events, both on-campus and virtual, will be organized to foster a sense of community and engagement among alumni. PIU will also create platforms for alumni to mentor current students, share their career experiences, and contribute to the university's development.

Alumni will be encouraged to participate in fundraising activities, supporting scholarships, research projects, and infrastructure development. By building a vibrant and supportive alumni network, PIU will create a valuable resource for its students and strengthen its reputation in the academic and professional communities.

## 19.2 Industry Collaborations and Management

PIU envisions to establish robust internship and placement programs with reputed companies, create a dedicated placement cell, and organize campus recruitment drives. The university will invite industry experts for guest lectures and workshops, ensuring that the curriculum remains relevant and updated. Collaborative research and development projects will be pursued to drive innovation, with joint funding opportunities explored. Corporate sponsorships will be sought for events, scholarships, and research projects, building long-term relationships with corporate partners.

Industry collaborations will be critical for enhancing PIU's curriculum and providing practical experiences for students. The university will establish robust internship and placement programs with reputed companies across various sectors. PIU has already signed MoUs with various plastics industry such as Supreme Industries Ltd., Jyoti Plastics Works Pvt. Ltd., Tipco Industries Pvt. Ltd., SKYi Composites Pvt. Ltd., Autotech SIRMAX, and many such renowned plastic industries for curriculum and module design, industry visits, projects, guest lectures, internships and campus recruitment.

A dedicated placement cell will be created to assist students in securing job opportunities and preparing for their careers. PIU will also organize campus recruitment drives, job fairs, and industry interaction sessions to facilitate connections between students and potential employers. These efforts will ensure that PIU graduates are well-prepared for the job market and have access to diverse career opportunities.

Guest lectures and workshops by industry experts will be a regular feature at PIU. These sessions will provide students with insights into the latest industry trends, challenges, and opportunities. By interacting with professionals from various fields, students will gain practical knowledge and develop skills that are relevant to their careers. Additionally, these interactions will help faculty stay updated with industry developments and incorporate practical insights into the curriculum. PIU will also encourage faculty to collaborate with industry partners on research projects, driving innovation and practical solutions to real-world problems.

Collaborative research and development projects will be a priority for PIU. The university will partner with industries on R&D projects that address critical challenges and drive innovation. These collaborations will provide students and faculty with opportunities to work on cutting-edge research, develop new technologies, and contribute to the advancement of knowledge. PIU will seek joint funding opportunities for these projects, leveraging resources from industry partners, government agencies, and research grants. By fostering a culture of innovation and collaboration, PIU will enhance its research capabilities and contribute to the development of new solutions that benefit society.



### 19.3 Internationalization and Global Goals

PIU aims to position itself as a globally recognized institution by establishing student and faculty exchange programs with international universities, forming strategic alliances for dual-degree programs and collaborative research, and hosting international conferences. PIU in the near future shall seek international accreditations to enhance its credibility and continuously improve academic standards and infrastructure to meet global benchmarks. These efforts will collectively contribute to PIU's goal of becoming a world-class institution recognized for its excellence in education, research, and community engagement over the next decade.

As a progress, PIU has signed a MoU with the University of Massachusetts at Lowell (UML), USA. The agreement encompasses faculty development, Student-faculty exchange through UML training, peer mentorship, and also collaborating in conducting technical webinar series and certificate courses. Joint research initiatives are one of the strategies that PIU plans to actively employ and shall pursue with international partners to address global challenges and drive innovation. These collaborations leverage the strengths and expertise of both PIU and its partners, resulting in impactful research outcomes.

PIU will sign MoUs with leading universities and research institutions to formalize collaborations and outline areas of mutual interest. These agreements will facilitate the exchange of knowledge, resources, and expertise. Establishment of exchange programs will allow students to study abroad at partner institutions for a semester or academic year. These programs will provide students with a diverse and enriched learning experience.

Faculty exchange programs will be established to promote academic collaboration and knowledge sharing. PIU faculty will have the opportunity to teach and conduct research at partner institutions, while faculty from partner institutions will be invited to PIU.

PIU's efforts to build networks and partnerships will collectively contribute to its goal of becoming a world-class institution recognized for its excellence in education, research, and community engagement.

CHAPTER

# 20

**Achieving Excellence:  
Accreditation and Ranking**

## Achieving Excellence: Accreditation and Ranking

Accreditation and ranking are essential procedures that play a vital role in appraising and enhancing educational institutions. Accreditation assists as a quality assurance mechanism, ensuring that an institution meets established standards of excellence in education, administration, and infrastructure. This inclusive process measures various aspects, including academic programs, faculty qualifications, research output, and student services, providing a seal of approval that signals observance to rigorous quality benchmarks. Ranking offers a comparative analysis of institutions based on criteria such as academic performance, research output, faculty expertise, student satisfaction, and graduate employability. It provides relative positioning, helping stakeholders make informed decisions while fostering a competitive environment that encourages continuous improvement and innovation.



For Plastindia International University (PIU), accreditation and ranking are pivotal in establishing its reputation and credibility globally, enhancing visibility, and attracting top-tier students, faculty, and research opportunities. These processes contribute to transparency, accountability, and informed decision-making, supporting PIU's mission to become a world-class institution in plastics and polymer education.



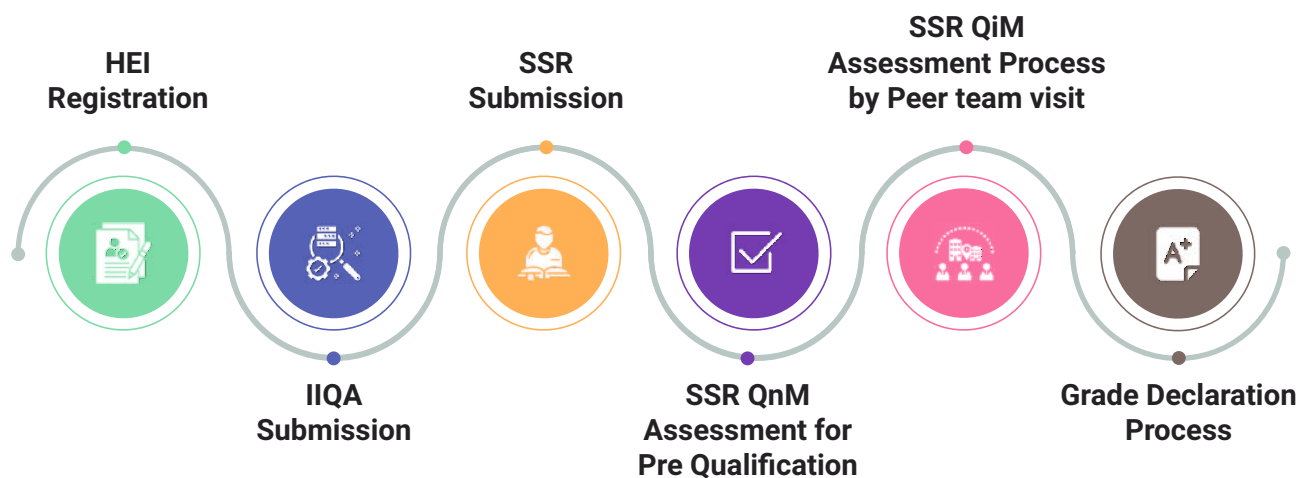
## 20.1 National Assessment and Accreditation Council (NAAC) Accreditation

NAAC is an autonomous body established by the University Grants Commission (UGC) of India. It was formed with the primary aim of assessing and accrediting institutions of higher education in India. The council ensures that institutions follow the quality standards in terms of their educational processes and outcomes.



NAAC conducts thorough assessments of institutions, evaluating various criteria such as curricular aspects, teaching-learning processes, research, infrastructure, student support, and governance. This comprehensive assessment results in the awarding of grades that reflect the overall quality and performance of the institution. NAAC also promotes a culture of quality and continuous improvement, encouraging institutions to adopt best practices and innovative methods to enhance educational outcomes.

By ensuring transparency and accountability through public sharing of results, NAAC holds institutions accountable for maintaining and improving their standards. Additionally, NAAC accreditation can influence funding decisions by government and non-government agencies, facilitating resource allocation by helping institutions secure grants and financial aid. Moreover, NAAC accreditation serves as a benchmark for institutions to compare their performance with national and international standards, aiding in gaining recognition and credibility both within India and globally.

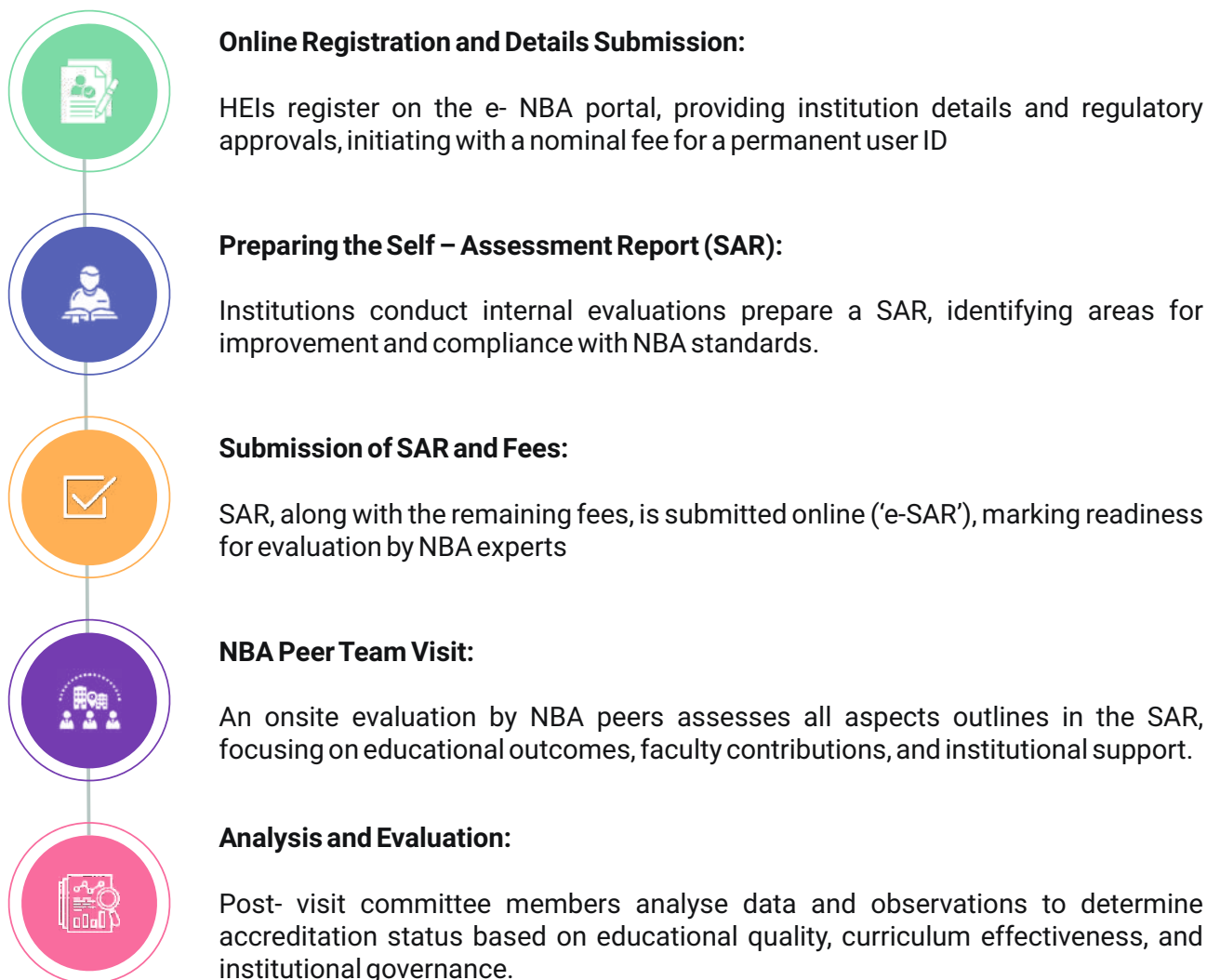


**Figure 1:** NAAC Accreditation and Assessment Process Flow

For Plastindia International University (PIU), obtaining NAAC accreditation would signify a commitment to excellence and adherence to high educational standards. It would enhance PIU's credibility, attract quality faculty and students, and foster a culture of continuous improvement. Incorporating NAAC accreditation in PIU's Institutional Development Plan aligns with its mission to achieve academic excellence and global recognition in the field of plastics and polymer education.

## 20.2 National Board of Accreditation (NBA) Accreditation

NBA is an autonomous body established by the All India Council for Technical Education (AICTE) in 1994. The NBA is responsible for the accreditation of technical education programs in India, including engineering, management, pharmacy, architecture, and hospitality. Its primary objective is to ensure that these programs meet the quality standards required for producing competent and skilled professionals.



**Figure 2** NBA Accreditation and Assessment Process Flow

NBA uses a grading system to categorize programs based on their quality and performance. The grades range from Tier I (highest level of accreditation) to Tier III. Programs that do not meet the minimum standards are not accredited.

For Plastindia International University (PIU), obtaining NBA accreditation for its technical programs would signify observance to the highest standards of quality in technical education. It would demonstrate PIU's commitment to producing skilled professionals in the fields of polymer science, plastics technology, and related disciplines. NBA accreditation would also enhance the PIU's reputation, attract high-quality students and faculty, and foster collaborations with industry and academic institutions globally.

### 20.3 National Institutional Ranking Framework (NIRF)

The National Institutional Ranking Framework (NIRF) is a revolutionary initiative established by the Ministry of Education, Government of India, in 2015. NIRF aims to provide a comprehensive and transparent framework for evaluating and ranking higher education institutions across India. This framework evaluates



universities and colleges based on various parameters, including teaching, learning, and resources; research and professional practices; graduation outcomes; outreach and inclusivity; and perception. By offering a standardized assessment, NIRF enables institutions to understand their relative standing, identify areas for improvement, and benchmark their performance against peers.

For Plastindia International University (PIU), participating in the NIRF rankings holds significant importance. Attaining a high NIRF ranking would enhance PIU's reputation and credibility, both nationally and internationally. It would also attract prospective students, faculty, and research opportunities, thereby fostering an environment of academic excellence and innovation. A favorable NIRF ranking has a potential to influence funding decisions and partnerships with industry and government bodies, further supporting PIU's mission to be a leading institution in plastics and polymer education. Inclusion in the NIRF rankings aligns with PIU's commitment to maintaining high standards of education, research, and infrastructure, ensuring continuous growth and improvement in its institutional development plan.

### 20.4 Gujarat State Institutional Rating Framework (GSIRF)

The Gujarat State Institutional Rating Framework (GSIRF) is a pioneering initiative developed by the Knowledge Consortium of Gujarat (KCG) in partnership with the Indian Centre for Academic Rankings & Excellence (ICARE), India's most trusted institution ranking and rating authority. The GSIRF aims to upraise the standards of higher education in Gujarat by creating world-class institutions within the state. This comprehensive ranking system evaluates institutions based on a variety of



parameters, including academic quality, research output, infrastructure, student support services, and governance, ultimately providing an overall score that reflects the institution's performance and standing.

Achieving a high GSIRF ranking would significantly enhance PIU's prestige and recognition within Gujarat and beyond. It would attract high-caliber students and faculty, promote research collaborations, and open doors to additional funding and resources from both governmental and private entities. Moreover, a strong GSIRF ranking would demonstrate PIU's commitment to excellence and continuous improvement, aligning with the university's goal of becoming a leading institution in plastics and polymer education. Integrating GSIRF participation into PIU's Institutional Development Plan underscores the university's dedication to maintaining high standards of education, research, and overall institutional performance, ensuring sustained growth and development.

PIU has strategically planned to pursue the aforementioned accreditation and ranking once it meets the requisite operational period criteria. From its inception, PIU aims to meticulously maintain comprehensive data and documentation to facilitate a seamless application process in the future. By proactively managing records and adhering to the standards set by accrediting bodies, PIU ensures it is well-prepared to demonstrate its commitment to quality education and institutional excellence when the time comes to apply for these prestigious recognitions.

This forward-thinking approach underscores PIU's dedication to transparency, accountability, and continuous improvement, setting a strong foundation for its academic and administrative endeavors.

CHAPTER

# 21

**Action Plan:  
A Roadmap for the Next Decade**

## Action Plan: A Roadmap for the Next Decade

Plastindia International University's strategic action plan for the next decade is structured into three distinct categories: short-term, mid-term, and long-term plans. The short-term plan focuses on immediate goals and initiatives to be achieved within the next 1 year, ensuring quick wins and foundational improvements. The mid-term plan outlines objectives and projects spanning the next 2 years, targeting significant growth and development milestones. Lastly, the long-term plan envisions the PIU's trajectory over the next 7 years, aiming for transformative changes and sustained success in alignment with our overarching mission and vision.

### 21.1 Short-term Plan (2024 to 2025)

#### 1. Progressive Curriculum Initiatives

---

- PIU is committed to the continuous evaluation and enhancement of our academic programs to ensure alignment with the National Education Policy (NEP-2020).
- This involves regularly assessing current programs and developing new ones that meet industry demands and incorporate the latest educational advancements, with a particular focus on the plastics and polymer sectors.
- To strengthen curriculum, strategies will be identified and collaborate with key industrial partners in the plastics industry.

#### 2. Diverse Program Initiatives

---

- PIU blends learning approach integrates digital tools, combining traditional face-to-face instruction with online resources to create a more flexible and enriching learning environment.
- To prioritize diversity-focused programs by developing pilot initiatives that address the varied needs of our diverse student body, promoting an inclusive atmosphere where all students can thrive.
- To ensure that education remains relevant and practical, by emphasizing bridging gaps between theory and practice by focusing on skill development and incorporating industry related experience into curriculum.

#### 3. Innovation and Research Roadmap

---

- Approach towards Research, Innovations, and Extension is designed to foster a dynamic and impactful academic environment for developing a comprehensive policy that supports and enhances the research culture among students and faculty, promoting a vibrant atmosphere for scholarly inquiry and innovation.
- PIU focuses on identifying thematic research areas that align with our university's strengths and expertise, ensuring that our research efforts are both relevant and impactful.
- Strategic financial planning will be undertaken to allocate resources effectively towards inventions and research projects
- PIU will undertake initiatives which also include enhancing research infrastructure and capabilities through targeted sensitization and support efforts and is dedicated for maintaining and advancing best practices

#### 4. Infrastructure and Learning Resources Enhancement

---

- PIU's efforts include Infrastructure and Learning Resources to support a high-quality educational environment for significant improvements to the campus's physical facilities, ensuring that infrastructure meets the evolving needs of students and faculty.
- By also enhancing library's collection by expanding access to a diverse range of online learning tools, which will support and enrich the academic experience.

#### 6. Governance, Leadership, and Management Strategies

---

- Governance, Leadership, and Management through strategic initiatives aimed at fostering effective institutional leadership at PIU by focused approach on developing a clear route towards exemplary leadership and governance, ensuring that our administrative framework supports transparency, accountability, and strategic decision-making.
- This includes the creation and implementation of a forward-looking plan that aligns with our vision and goals, guiding the university towards sustained growth and excellence.

#### 5. Student Support and Progression Initiative

---

- For Student Support a comprehensive policy shall be designed to create a student-friendly, student-owned campus that empowers and engages our learners focusing on developing an academic atmosphere.
- Additionally, to establishing a reliable system to guarantee that every student has access to a forward-thinking career plan, equipping them with the tools and guidance needed for their professional growth.
- To further enrich the learning experience and actively involving alumni in various learning opportunities, leveraging their expertise and experiences to provide valuable insights and mentorship for current students

#### 7. Institutional Values and Best Practices

---

- By embedding Institutional Values and Best Practices into every aspect of educational environment PIU is focused on raising awareness of social and gender equality among both students and faculty, fostering an inclusive and equitable campus culture.
- To commit for promoting sustainability and environmental consciousness is central to our operations, ensuring that it integrates eco-friendly practices and raise awareness about environmental stewardship.
- Emphasizing the importance of moral principles and business ethics, guiding students to develop strong ethical foundations in their professional and personal lives.

## 21.2 Mid-term Plan (2025 to 2027)

### 1. Progressive Curriculum Initiatives

---

- Beginning with the academic year 2025, PIU will roll out a redesigned curriculum that aligns with NEP–2020 recommendations. This new curriculum will be informed by a thorough analysis of regional and industry-specific needs to identify and address any gaps.
- Each program will incorporate a skill education component, ensuring that students acquire practical abilities alongside theoretical knowledge. PIU will offer students the choice between direct employment prospects and self-employment through specialized education, catering to diverse career aspirations.
- Additionally, focus will be on developing entrepreneurial skills to empower students for innovative and self-driven career paths.

### 3. Innovation and Research Roadmap

---

- Commitment for increasing our research capacity and broadening the scope of research activities, which will also improve the quality of publications produced by our faculty and students.
- To support these efforts, PIU will invest in upgrading departmental infrastructure and mechanisms that facilitate research.
- PIU will also extend to boosting start-up and incubation activities, fostering an entrepreneurial spirit among our researcher and dedicated to ongoing outreach initiatives that promote diverse research activities and engage with broader communities.

### 2. Diverse Program Initiatives

---

- PIU's approach to Teaching-Learning and Evaluation integrates digital learning tools to implement a blended learning model and combination of traditional classroom instruction with online resources enhances the overall educational experience.
- To introduce modified pilot programs that focus on student diversity, addressing various learning needs and backgrounds to foster an inclusive educational environment.
- PIU's commitment extends to closing the gaps between theoretical knowledge and practical application, with a strong emphasis on skill development and industry integration.

### 4. Infrastructure and Learning Resources Enhancement

---

- By focusing on Infrastructure and Learning Resources the development and renovation of physical infrastructure facilities will be enhanced, ensuring that PIU campus supports modern educational needs and provides an optimal learning environment.
- Efforts include the digitization of the library and the efficient utilization of teaching and learning resources, making access to information and educational tools more convenient and effective.
- Additionally, dedication towards enriching e-resources and expanding the e-learning environment, providing students and faculty with comprehensive digital tools and platforms to support innovative and flexible learning experiences.

## 5. Student Support and Progression Initiative

---

- By Focusing on the development and renovation of physical infrastructure facilities, ensuring that campus supports modern educational needs and provides an optimal learning environment
- Additionally, PIU is dedicated to enriching our e-resources and expanding the e-learning environment, providing students and faculty with comprehensive digital tools and platforms to support innovative and flexible learning experiences.

## 6. Governance, Leadership, and Management Strategies

---

- For fostering strong Governance, Leadership, and Management practices to ensure the effective functioning of the institution by prioritizing good governance by adhering to core values
- To promote fairness and inclusivity PIU will be establishing an "Equal Opportunity Cell" to support and uphold equal access and treatment for all members of our university community.
- Initiative to continuously review the effectiveness of strategic plans, making necessary revisions to adapt to evolving needs and challenges.

## 7. Institutional Values and Best Practices

---

- By actively promoting social fairness and gender initiatives, striving to create an inclusive and equitable environment for all members of our community.
- The dedication to sustainability and environmental awareness is central to operations, to implement projects and practices that support eco-friendly principles and foster a culture of environmental responsibility.
- PIU will also focus on enhancing ethical awareness and human values through various projects, ensuring that our students and staff are guided by strong moral principles.

### 21.3 Long-term Plan (2027 to 2034)

#### 1. Progressive Curriculum Initiatives

---

- PIU will continuously enhancing Curricular Aspects by introducing new initiatives based on comprehensive survey results and the outcomes of trial projects.
- The approach includes selecting industries for collaborative academic programs that address both domestic and international needs, ensuring curriculum remains relevant and impactful.
- By integrating entrepreneurship, skill development, and capacity building into curriculum elements, PIU aims to equip students with practical skills and entrepreneurial mindsets essential for their future success.

#### 2. Diverse Program Initiatives

---

- PIU focuses on improving student enrollment and creating an instructional setting that prioritizes student engagement and success.
- PIU is committed to advancing instructional methods in accordance with NEP-2020 implementation guidelines, ensuring that our teaching strategies meet contemporary educational standards.
- Evaluation procedures and assessment methods will be reformulated through thorough examination and analysis of educational outcomes.
- To provide students with general and life skills training to enhance their employability and readiness for the workforce.

### 3. Innovation and Research Roadmap

---

- For Research, Innovations, and Extension initiatives will be integrated by promoting and enhancing societal research that addresses pressing community needs support and advance industrial research to drive technological and industrial progress.
- These initiatives also include creating an innovation ecosystem and supporting startup and incubation efforts to foster a culture of entrepreneurship.
- PIU commits to engage in Centres of Excellence (COEs) to drive research excellence and respond proactively to community needs through campus-based projects and outreach programs.

### 5. Student Support and Progression Initiative

---

- In Student Support and Progression, PIU aims to develop a robust system to support students with disabilities, ensuring an inclusive and accessible learning environment.
- To promote competitiveness and research aptitude among both undergraduate and postgraduate students through targeted programs and initiatives.
- Additionally, by improving activities focused on students, enhancing their overall university experience and supporting their academic and personal development.

### 7. Institutional Values and Best Practices

---

- PIU is dedicated to embodying core values and implementing best practices that align with its mission of fostering a transformative educational environment.
- Central to this commitment is the active implementation of social awareness campaigns aimed at empowering women and socially disadvantaged groups.
- PIU will launch targeted initiatives and partnerships to support these communities, ensuring that educational opportunities are equitable and inclusive.

This will be achieved through continuous professional development, rigorous academic standards, and recognition of outstanding achievements.

### 4. Infrastructure and Learning Resources Enhancement

---

- To support PIU's academic mission focus will be on Infrastructure and Learning Resources by constructing physically upgraded campus facilities that enhance the learning environment.
- To also develop cutting-edge technology facilities to support outreach, teaching, and research activities. Other efforts include expanding online resources and broadening the learning horizon to provide students and faculty with comprehensive digital tools and platforms.

### 6. Governance, Leadership, and Management Strategies

---

- By establishing a robust Brand Equity Framework. This model will be designed to enhance the university's reputation and visibility through the adoption of innovative delivery methods and advanced learning technologies.
- By integrating cutting-edge educational practices and leveraging modern digital tools, PIU aims to position itself as a leader in the academic landscape, attracting top-tier students and faculty.
- Fostering a culture of excellence and innovation and will promote inclusive management practices to cultivate a sense of ownership and pride among all stakeholders.

CHAPTER

# 22

**Forging Ahead:  
The Way Forward**

## Forging Ahead: The Way Forward

Plastindia International University (PIU) is at the inception of its journey towards establishing a globally competitive institution. Our vision is to create a university with state-of-the-art facilities and cutting-edge laboratory equipment, designed to provide an unparalleled educational experience. The campus and infrastructure of PIU are meticulously planned to be eco-friendly, emphasizing circularity and sustainability practices.

To transform this vision into reality, support from the industry is crucial. The strong connection between PIU and the plastics industry will play a pivotal role in achieving our goals. This collaboration will ensure that PIU remains an industry-friendly university, fully dedicated to advancements in plastics and sustainability.

Moving forward, our focus will be on fostering robust industry partnerships that can provide invaluable insights, resources, and opportunities for our students and faculty. By leveraging these relationships, PIU aims to integrate practical industry knowledge into our academic programs, ensuring that our graduates are well-prepared to meet the demands of the modern workforce.

PIU will also seek collaboration with globally leading universities to enhance our academic programs and research capabilities. Our ongoing partnership with the University of Massachusetts, Lowell, USA, has been crucial in shaping our academic development and providing guidance. This collaboration has ensured that PIU's educational offerings meet international standards and has set a strong foundation for future partnerships.

Furthermore, PIU is committed to continuously enhancing its infrastructure and academic offerings to align with global standards. Our strategic development plan includes the phased implementation of advanced facilities and programs that support our mission of innovation, sustainability, and academic excellence.

PIU involves a synergistic approach, combining industry collaboration, sustainable practices, and cutting-edge education. By maintaining our focus on these core areas, we are confident in our ability to create a transformative educational environment that prepares students for successful careers and contributes to the advancement of the plastics industry and sustainable practices globally.



**PLASTINDIA  
INTERNATIONAL  
UNIVERSITY**

*Building Our Future Together*

SPONSORED BY PLASTINDIA FOUNDATION

**PLASTINDIA INTERNATIONAL UNIVERSITY**

Dungra Colony Road, Dungra GIDC, Vapi, Gujarat, INDIA - 396193

**Call:** +91 90167 84705, +91 90167 60979

**Email:** admissions@plastindia.edu.in, info@plastindia.edu.in

**Website:** www.plastindia.edu.in

